



***Silverdale United Rugby &  
Sports Club History***

## **Contents:**

<u>1:</u>	<u>Rugby - the beginning</u>
<u>2:</u>	<u>The early years</u>
<u>3:</u>	<u>Wade &amp; Orewa</u>
<u>4:</u>	<u>Club rugby</u>
<u>5:</u>	<u>First club rugby</u>
<u>6:</u>	<u>Kaipara sub-union</u>
<u>7:</u>	<u>Silverdale club rugby – moving forward</u>
<u>8:</u>	<u>Silverdale War Memorial Park</u>
<u>9:</u>	<u>The Auckland Rugby Union</u>
<u>10:</u>	<u>Silverdale RFC to Silverdale United RFC</u>
<u>11:</u>	<u>Kaukapakapa rugby club</u>
<u>12:</u>	<u>New clubrooms</u>
<u>13:</u>	<u>Trevor Hick</u>
<u>14:</u>	<u>Clubroom extension</u>
<u>15:</u>	<u>The 1970's</u>
<u>16:</u>	<u>The 1980's</u>
<u>17:</u>	<u>The 1990's</u>
<u>18:</u>	<u>2000's – The new millennium</u>
<u>19:</u>	<u>Netball</u>
<u>20:</u>	<u>Seahawks junior rugby</u>
<u>21:</u>	<u>2010's &amp; World Cup</u>

***This history is a living document. There may be things that are not correct or stories and facts that you feel should be included or perhaps excluded – if so please let the club know.***

# *A History of Hibiscus Coast Rugby*

---

## **1: Rugby – the beginning:**

Although it would appear that ball games of various kinds have been played for many centuries, it is now commonly accepted that the game of rugby football had its foundation in 1823 when William Webb-Ellis a schoolboy at Rugby School, Warwickshire “with a fine disregard for the rules of football as played in his time at Rugby School, first took the ball in his arms and ran with it, thus originating the distinctive feature of the Rugby game”.



Rugby School



William Webb Ellis

If you have an interest in reading about rugby and life at Rugby School at the time that William Webb-Ellis was a pupil, it would be worth taking time to read Thomas Hughes *Tom Brown's School Days*.

Rugby is recorded as first having been introduced to New Zealand in 1870 by Charles John Monro. He encountered the game while studying in London and on his return to New Zealand introduced the game to Nelson College. The first rugby recorded match – an 18-a-side affair - took place in Nelson on 14<sup>th</sup> May 1870.

*Interestingly our friends up the motorway – at Mahurangi, mention in the history of their club - that rugby was first played in the Mahurangi area in 1863, seven years before the 1870 Nelson game. The Mahurangi history makes mention of a British warship HMS Harrier playing rugby in the larger settlements of the Kaipara harbour.*

## 2: *The early years:*

The history and development of our club is closely linked to the growth and progress of the Hibiscus Coast and the Kaukapakapa area of the west coast. This history traces both the progress and development of the club and of the coastal areas north of Auckland in which our rugby developed; along with a brief overview of the history of the area.

As early as 1839 some land between the Okura and Weiti rivers was privately purchased from local Maori; which began with men seeking to exploit natural resources – mainly timber and minerals. Then in 1841 - finalised in 1854 - the whole coastline between Takapuna and TeArei Point was purchased by the Crown as part of the Mahurangi & Omaha Purchase, and from that time settlement of the coastal area grew rapidly. By the time the sale was completed much of the accessible native forest had been cut under license to supply building material and firewood for nearby Auckland.

Proximity to Auckland encouraged many new settlers to buy land around Orewa, Weiti and Rangitopuni rivers. Until dairying became an option in the early years of the twentieth century owners had to rely upon kauri gum, orchard produce and timber.

The development of the area, both west and east coasts was driven largely by the kauri timber industry and the ability to move the timber to Auckland – initially using bullocks and log rafts floated down rivers where the logs were then loaded onto ships. Gum digging had begun in the early 1870's also played an important part in the development of both the east and west coastal areas.

In these early days roads and transportation were almost non-existent. Both the east and west coasts relied largely upon coastal steamboats from Auckland, although the west coast journey from Onehunga entailed a crossing of the hazardous Kaipara Bar. By comparison the coastal journey from Auckland up to the east coast beaches was relatively easy. Initially beaches were used to land and pick up goods. Later jetties and river landings were built at key points along the coast.

Apart from a few sawyers moving over the area and robustly disputing felling rights with their rivals, the first European residents of the area were John and Emma Hatfield who came to the area around 1845 and are thought to have lived initially in what is now Pine Valley. Hatfield had bought all the land south of the Orewa River in partnership with two others. He and his family lived there for about seven years and in 1852 the land was leased and later bought by Maurice Kelly.

The first jetty built on the east coast was built at **Wade** in the 1860's, mainly for passengers, with other jetties and landings built later as the area developed. Timber wharves were a built on the west coast at Helensville to service the burgeoning timber industry.

Early roads developed from Maori tracks around the headwaters of the rivers. The sawyers turned some into bullock tracks, others becoming bridle paths. As late as the Even 1920's it is reported that a journey from Orewa House (northern end of Orewa) to Silverdale could take an hour. It was not until the 1930's that the district ceased to rely on coastal steamers for its contact with Auckland.

It is probable that sawyer and boat builder John Ryan and family were the first European family to live in Orewa. He bought the land as soon as it was made available by the Crown in 1854, but is known to have lived and felled timber for the preceding ten years or so. He sold the land at the northern end of Orewa to a Major Cooper in 1856 who spent many years draining the flat and preparing to farm but did not live in Orewa until 1864. In 1856 a small cottage was built on the site by Captain Issac Rhodes and his Maori wife.

Some years later in 1868 the land was purchased by Major Collings de Jersey Grut who emigrated from the island of Sark in the Channel Islands. Three generations of the Grut family lived in the house until 1918 during which time the cottage was extended and two gable roofs added. Orewa House as it was known became a postal depot for the surrounding area and was a busy place. Initially most visitors to the house were family, however in 1906 Orewa House became a commercial guest house.

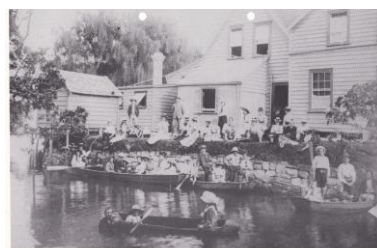
Few people lived in the area we now know as Orewa although farms – initially growing fruit and vegetables, then dairy - were being developed in the outlying areas.

As Auckland and the area developed a number of large houses were built in the 1870's and 1880's on the coast at Waiwera, Arkles and Orewa that became popular holiday spots for Aucklanders. Before jetties were built, visitors to the houses were offloaded from ferries onto small boats and then onto the local beach. Jetties were built at Waiwera, Arkles and Manly on the Whangaparaoa peninsula and at Wade and Puhoi in the late 1800's and early 1900's. Orewa was serviced from the beach.

As early as the late 1860's the Grut family at Orewa House and the Arkles family at the bay named after them, carried on the guesthouse tradition started by Robert Graham at Waiwera. Orewa House, Arkles House and Waiwera became popular holiday stops for Aucklanders, and by 1861 Orewa had grown sufficiently to justify its first postmaster – Captain Martin Krippner – who went on to establish Puhoi.



Orewa House 1902



THE NIUKUMELA STREAM  
Orewa House was a popular place for the Grut family for many years. In the year 1861 Orewa had grown sufficiently to justify its first postmaster - Captain Martin Krippner - who went on to establish Puhoi.

Arkles Bay 1900

By the late 1880's the road north from Devonport was being used by wheeled traffic despite being a clay road and impassable after heavy rain. The planned new road north of Wade (now Silverdale) was intended to go through Wainui by-passing Orewa. However Major Grut and his sons cut a rough track over the hill to Waiwera and managed with difficulty to drive a buggy through it – convincing the government surveyors to build the new road through Waiwera.

***As will be seen later in the story, Orewa House and its paddock is at the centre of the beginning of rugby on the Hibiscus Coast.***

The settlement to the west - around Kaukapakapa began a little later, with settlers arriving from England and Scotland. A boat service operated between Kaukapakapa and the northern Kaipara from 1863, and as the timber industry grew the ability to move the timber to Auckland became a priority, but moving timber to Auckland out of the notorious Kaipara Harbour proved to be difficult, which led to the building of a railroad north of Auckland which reached Helensville in 1881.

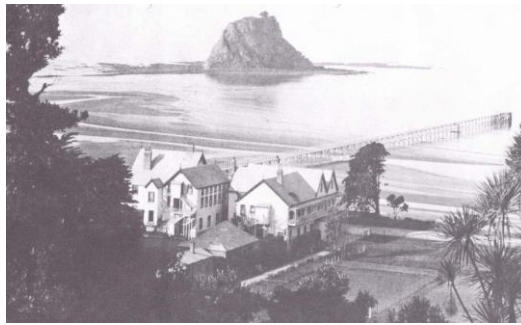
At that time the population of Kaukapakapa was 311 and roads had been built connecting to Riverhead, Tauhoa and Helensville although they were of poor quality. The river continued to provide the main access until the railway reached Kaukapakapa in 1898.

**Recollection:** *Charlie Earwaker (who played for the club 60 odd years ago) remembers a time before WW2 when teams made of 'casual' workers and gum diggers played football in our area.*



*Gum diggers at Pine Valley Road 1899*

Although Waiwera had become known for its therapeutic and curative properties as early as 1848, people started to travel to Waiwera in large numbers when the jetty and spa was completed in the 1860's.



*Waiwera and jetty 1910*

### 3: *Wade/Orewa:*

**Wade** as it was then known - later to be renamed Silverdale - is a central feature of our history.

The township developed at the furthest navigable part of the TeWeiti River. Timber had been felled on the river since early 1840's. It is probable that timber was rafted and floated down the river in these early days. The first jetty at Wade was built in the 1860's.

**Wade** grew into one of the region's busiest timber milling centres and coastal ports. Maurice Kelly acquired the timber felling rights at the head of the Orewa River in 1848, and the influx of workers employed by him and the opening up of the land for settlement following the finalizing of the Mahurangi purchase produced a population explosion. By 1853 it is estimated that there were probably close to three hundred people living in the area around the Weiti. Many early Auckland settlers spent time at Wade, where Maurice Kelly opened a licensed public house and in 1870 had established the Wade Hotel, which unfortunately was destroyed by fire shortly after it's building, but quickly rebuilt. By 1869 **Wade** had its first post office and school. By comparison Orewa appears to have grown more slowly.

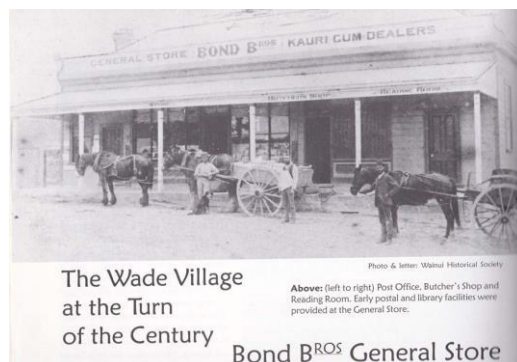
An agricultural hall had been built in Silverdale but in 1896 it was burnt down, rebuilt and nearly destroyed again in 1899.



*Wade township 1912*



*Wade Hotel 1880*



*Wade township c1900*

Roads were slow to be developed, beaches and later jetties and landings continued to be the primary means of communication from Auckland up and down the coast. However the

first road to Waiwera – using Orewa beach as a highway – was completed in 1880, and this added a significant impetus to the development of the area.



*Mail coach at Orewa*

In these early days of settlement the area was populated mainly by sawyers and gum diggers. The **Wade** around this time appears to have been a ‘wild and rough place’, regarded by many as a ‘den of thieves’. This was slowly to change. The arrival of the churches had the sobering affect hoped for. The Methodists opened the first church in 1860 followed by other denominations. By 1911 **Wade** had become a respectable little town with shops and the original hotels – as well as its churches. At this point the locals decided that the time was right to change the name.

The name ‘**Silverdale**’ appears to have been chosen by resident Henry Frith, an English settler who knew of the English town of Silverdale (near Stockdale) and suggested the name. His cottage is now located in the Silverdale Pioneer Village.

#### **4: Club Rugby:**

Growth of rugby was reliant upon population and the ability to be able to travel to games with other clubs. As townships and settlements grew many had growing numbers of men wanting to play 'football'. However in the early days and until it became relatively easy to get from township to township, there was little organised competition rugby.

Whereas competition rugby was being played in areas of higher population south of what is now the Harbour Bridge, competition rugby came only to areas to the north of the 'bridge' – as population grew and the ability to get from place to place became easier.

We know that rugby football was first played on both the east and west coasts around the late 1880's. We are also aware that Kaukapakapa joined an organised competition in 1905 whereas Silverdale only joined the reformed Kaipara Union competition in 1930. *Why the thirty year difference?* It would appear that although the population on the east coast around the settlement of Wade was greater and growing faster than the population of the west coast area at this time, the problem on the east coast was one of poor transportation making it difficult to get to opposition grounds. On the west coast the introduction of the railway to Kaukapakapa made travel considerably easier.

Although transport problems on the west coast had been similar to those on the east coast – relying upon coastal shipping, the situation changed on the west coast with the introduction of a railway line from Auckland north, which reached Helensville in 1880 and Kaukapakapa in 1898. Timber interests drove the development of the railway and a branch line was installed to Kumeu and Riverhead to cut time and costs of moving timber to Auckland by bullock team and lengthy coastal shipping. Although the railway was introduced to service the timber industry it also provided a welcome, although not regular form – of transport between the townships of the west coast.

Many Clubs and teams were being established. Pretty much every settlement, no matter the size had a football team. Helensville & Kaukapakapa clubs first played in the 1890's. Indeed teams/clubs sprung up from places such as Puhoi, Orewa, Albert, Wade, Warkworth, Kaipara Flats, Omaha, Parakai, TePua, Woodhill, Riverhead and many others.

Later many clubs merged; Warkworth, Kaipara Flats and Omaha for example became Mahurangi RFC and later Helensville, Riverhead & Parakai became Western United. As populations grew or sometimes declined and strength of clubs changed, mergers/amalgamations occurred and continue at the present time.

Mergers/amalgamations often brought about a change to the name of the club. Helensville RFC for example became part of Western United and then reverted to Helensville Districts RFC, but as is common in such cases they continue to trace history back to when they first played.

## 5: *Silverdale – first rugby:*

Given the rapid growth and development of the Hibiscus Coast in these early days, it is not surprising that research has found that the first references to football/rugby having been played on the Hibiscus Coast refer to **Wade** and to **Orewa**– rather than to Silverdale (which did not change name from Wade to Silverdale until 1911).

Research – particularly of newspaper articles of the time – make mention of football (rugby) being played on the Hibiscus Coast.

The earliest reference being a New Zealand Herald article of the 1<sup>st</sup> September 1887 recording that a match was played between Orewa and Warkworth at Gruts' paddock, Orewa on the **27<sup>th</sup> August 1887**.

**A football match was played at Orewa, in Messrs. Grut Brothers' paddock, on last Saturday, between teams from the Warkworth and Orewa Football Clubs. The game was a fast and excitable one, and some good play was shown on both sides. The Warkworths played a passing game, but were weak in the scrums. As expected, the Orewas, who were a newly-formed club, were defeated by two tries to nil. The day being fine, a large number of spectators availed themselves of the opportunity to witness the first game of football played in this district, and were highly interested. After the match, the visitors were entertained to dinner at Messrs. Grut Brothers', who catered. Captain Storey occupied the chair, and Captain Jenkins the vice-chair, supported by the officers of both clubs. After the usual loyal toasts were given and duly responded to, the chairman proposed the toast of the evening—"Our Visitors," coupled with the name of Captain Ohlson—which was drunk with musical honours. Captain Ohlson responded in a neat speech, thanking the Orewas for their very cordial reception. A smoke concert followed, after which both teams adjourned, and spent the evening at a dance.—[A Correspondent.]**

The Grut Brothers paddock where the match was played is thought to have been located opposite the existing Orewa House located at the north end of Orewa, and it is presumed that the after match dinner and entertainment referred too in the newspaper report was held in the existing Orewa House which had been acquired by Major Collings de Jersey Grut in 1868.

Following the discovery in 2014 of the New Zealand Herald article members of the club celebrated with a gathering at the Orewa House paddock – previously the Grut Brothers paddock – where the club patron Stuart Flexman cut a cake to celebrate the occasion.

The following June 1888 a return match was played between Orewa and Warkworth again at the Orewa Grut paddock. Orewa winning by two tries to nil. A 'smoke concert' bought the enjoyable day to a close.

### OREWA.

**THE return football match, Orewa v. Warkworth, was played in Messrs. Grut Brothers' paddock here on Saturday last, the local team being victorious by two tries to nil. After the match the visitors were entertained to an admirable dinner, served at Messrs. Grut's. A smoke concert brought a very enjoyable evening to a close.—[A Correspondent.]**

*New Zealand Herald 29<sup>th</sup> June 1888*

Officers of the club in 1889 were:

President:	Sanuel Connolly
Vice President:	James Crawford
Secretary & Treasurer:	Mr. F. Norton
Committee:	Bert Brunton Robert Brunton James Howell
Captain:	Mr. H. Jenkins
Vice Captain:	Mr. W. Howell



### ***Founding club members:***

The Bruton boys were related to James through the marriage of their sister Harriett to William Howell brother of James.

William and Hariata Howell lived in Upper Waiwera, and had five children – Mary, William, James, Richard and Thomas.

James and his brother Richard leased farm land in Upper Waiwera from William Moyes in 1893 and 1894. James also worked for Henry Bartlett, a builder in Wainui area 1890's and early 1900's. Bartlett's notebook records James working on the School Teacher's House at Waiwera in November 1904.

James assigned his interest in the lease to Richard's wife Mildred in 1909, and later went on to farm at Browns Bay. James also bred racehorses and sold them to the Honourable

Elliot Davis and Oliver Nicholson, who raced them in partnership with considerable success. James built his own house in Glencoe Road, Browns Bay of pit-sawn timber. His sister Mary joined him in Browns Bay, and she inherited the house and farm when James (who never married) died in 1935. James was buried in the Silverdale Anglican cemetery.

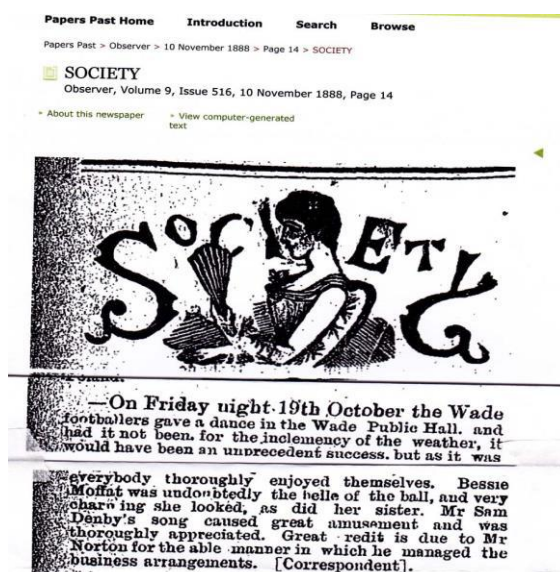
Robert and Bert Brunton appear to be brothers, though they also seem to have the same first name (Robert). Robert was born 13 Jan 1865 and Bert the 25 Oct 1869, both at Wade. Their father Robert Brunton emigrated from Scotland in 1853 with his parents, brother John and possibly some of his three sisters. He and his English wife Harriet (nee Allingham) were early settlers at Wade and had a large family. The Brunton home at the Wade was said to be very basic, with a clay floor. Both Roberts were farmers.

The attached photo refers to the Brunton Brothers, possibly the boys' father Robert and his brother John, or Robert and Bert (and their brother John) – the other seven brothers were probably too young to own a building in the 1890's. It is known that the Brunton boys were related to James through marriage of their sister Harriett to William Howell brother of James.

The next related reference appears in the Observer newspaper of 10<sup>th</sup> November 1888 which reported that the Wade Footballers held a dance at the Wade Public Hall on the 19<sup>th</sup> October 1888. This interchange of names between Orewa and Wade persisted in the press for a number of years, with Wade Football Club becoming more common usage after 1890. This appears to reflect the development of the Wade township as a sizeable community built on logging.

It had been thought that football clubs had been established in both Orewa and Wade, but it is now considered that there was only one club established referred too variously in the press as Orewa and Wade. The Wade Football Club continued until 1911 when the name of Wade township was changed to Silverdale.

The Orewa report and the Wade report preceding it – both held at the Wade points to the Wade and Orewa being a single club and that the use of differing names being an oversight on the part of the Observer correspondence.



*The Observer reports (27 April 1889) that the Orewa Football Club held their annual meeting at Wade Public Hall on the 13<sup>th</sup> April 1889.*

## OUT DOOR SPORTS

Observer, Volume 9, Issue 540, 27 April 1889, Page 13

[About this newspaper](#) [View computer-generated text](#)



[By MILO.]  
NOTICE.

—The Orewa Football Club held their annual meeting at the Wade on the 13th inst. The officers for the ensuing season were elected as follows:—President, Mr Samuel Connolly; vice-president, Mr James Crawford; secretary and treasurer, Mr F. Norton; committee, Messrs Bert and Robert Brunton, and James Howell; captain, Mr H. Jenkins; vice-captain, Mr W. Howell. Two resolutions affecting the financial position of the club were carried, but a resolution in favour of shifting the head-quarters of the club met with no support. The first practice was decided to be held on the 20th inst. It is generally understood that the Helensville team intend playing a return match here, as they did not turn up last season. The Orewa boys hope they will arrive this time.

*The Observer reports (24 May 1889) of a match played between Helensville and Orewa at Orewa on Saturday 18 May 1889 – which Orewa won by 14 points to nil.*

## ATHLETIC NOTES.

Auckland Star, Volume XX, Issue 122, 24 May 1889, Page 3

[About this newspaper](#) [View computer-generated text](#)

## ATHLETIC NOTES

### FOOTBALL

HELENSVILLE V. OREWA. This match was played at Orewa on Saturday, 18th May. Helensville could only raise twelve men. Orewa had a full team, but they were not good enough for Helensville, who won by 14 points to nil. H. Poland, who captained the Helensville men and played three-quarter, proved altogether too good for Orewa, and scored six tries, from four of which goals were kicked. J. Simcox, Ryan, McManus, and Harris also played well for Helensville, and for Orewa Jenkins (captain), Howell, Branton, and Thornburn played best. A capital dinner was provided by the Orewa boys, followed by a smoke concert, and the Helensville team were thoroughly delighted with their trip.

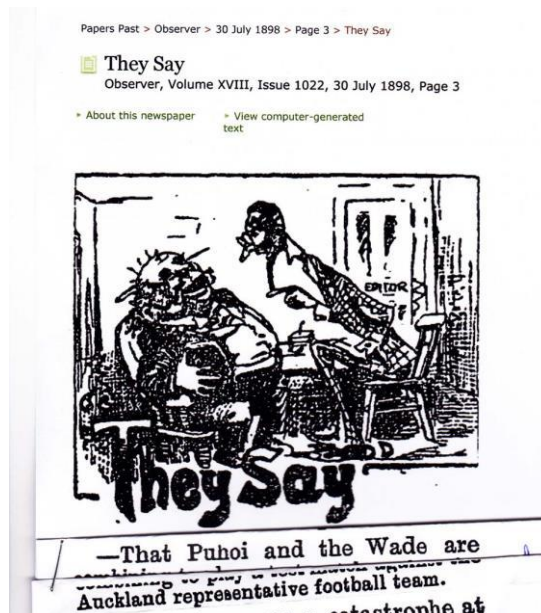
By M. S. M. (at Auckland) —

*The Observer also reports (28 September 1889) that a match was played between Warkworth and Orewa on a paddock adjoining the Waiwera Hot Springs Hotel.*



—Warkworth *versus* Orewa.—A match between the above teams was played in a paddock adjoining the Waiwera Hot Springs Hotel on Saturday, and after a very exciting game, victory rested with the Orewa team by two points. The Warkworth men were stimulated to renewed exertions, but they could not stave off defeat. The second spell ended as did the first in Orewa scoring a try, which they failed to convert into the major points. Where all tried so hard to score, it is hard to single out individuals for praise, but Wiapo, Parkinson, McKinney and two members of the Bombay Football Club played up well, though the latter had a tendency to be off-side frequently. Mr Wenzlick for Orewa played well and had hard luck when speeling with one of Warkworth team in the ball just going outside the touch line when a try seemed inevitable. Jenkins, Brunton (2), Howell and Faithfull, played a good game, while J. Schollum and Ryan collared in good style. After the usual cheers, the teams had a hot bath and sat down to an excellent dinner served in Mr Beetham's best style, after which a dance in the Social Hall of the hotel wound up a pleasant day's sport.—(Correspondent.)

The Observer reports (30 July 1898) that **Puhoi and Wade** are combining to play a test match against the Auckland representative team.



The Observer reported (20 August 1898) that 'The Alberts' played **Wade** at the **Wade** on the 19<sup>th</sup> August 1898 in heavy rain. The match was won by the **Wade** three tries to one.



It is known that rugby was played on what we now know as the Hibiscus Coast as early as the late 1880's. The newspaper reports shown here provide evidence that rugby was being played at **Orewa** at **Wade** and elsewhere at this time.

We are unclear as to the early years of the 1900's. Anecdotal evidence points to rugby having been played in the 1920's: Tom Shanks an ex Kaukapakapa player has recalled travelling by horse to play Silverdale in 1926.

It is also possible to speculate – but not prove at this time - that as roads and transportation improved, the **Orewa** club merged with the **Wade** club sometime in the early 1900's and that sometime after 1911 when **Wade** changed its name to Silverdale, the Wade Rugby Club also changed its name to the **Silverdale Rugby Club**.

Although rugby continued to be played by the Wade/Silverdale club, the difficulty of getting to other clubs made playing in a formal club competition impractical until 1930. It is known that 'the ball was kicked about' on Saunders property – which is now the Silverdale War Memorial Park; at Moffat's Paddock at Red Beach; at the present Orewa Western Reserve Domain (behind the Bowling Club) and at Hick's field. Later matches were also played at Earwaker's farm at Dairy Flat.

[Papers Past Home](#) [Introduction](#) [Search](#) [Browse](#)[Papers Past](#) > [Rodney and Otamatea Times, Waitemata and Kaipara Gazette](#) > 9 September 1914 > Page 8 > FOOTBALL**FOOTBALL**

Rodney and Otamatea Times, Waitemata and Kaipara Gazette , 9 September 1914, Page 8

[About this newspaper](#) [View computer-generated text](#)[List of search results](#) ▶**FOOTBALL**

A football team may journey to Wade next Saturday, and Wade team most likely come to Warkworth and play a return match the following Saturday.

It would appear that the Wade club did not immediately follow the name change adopted by the town's name change in 1911 to Silverdale, which may simply be as a result of pride with their past - a newspaper report of 1914 mentions the Wade Rugby Club continuing to use the name of Wade. Clearly they did change their name to Silverdale RFC, but it is not known precisely when the change occurred.

Numerous records and references to Silverdale rugby exist from the beginning of the 1930's - recorded in the *Official History of the Auckland Rugby Union* and in press reports of the time.

## 6: *Kaipara Sub-Union:*

The Kaipara Rugby Union appear to have had difficulties during its early years.

The first mention is contained in an Auckland Star report dated 17<sup>th</sup> July 1900 which reports that a union had been established involving Helensville, TePua and Kaukapakapa and that three matches had already been played.

A later report - dated 30<sup>th</sup> May 1905 - mentions that a meeting had been held that week in Helensville between delegates of TePua, Helensville and Kaukapapapa clubs and at the meeting it had been decided to form a union, to be called the 'Kaipara Rugby Union'. The report goes on to list the names of officials elected for that year.

Then in May 1912 the Kaipara & Waitemata Echo reported that a meeting under the chairmanship of Mr. Tui McEwin had been held and that it was decided to form a Union to be called The Kaipara Rugby Union to consist of the Helensville, Parakai and Otakinini Clubs. The report also mentions that Mr. J.G. Coates MP was elected Patron and Mr. Jas McLeod elected President. Boundaries were also agreed, being Helensville Club Town Board District; Parakai Club from Takapau Creek to Ohiranga; Otakanini Club from Takapau Creek to South Head.

In the 1920's the union and competition further developed with teams from Parakai, Waimauku, Glorit, Kaukapakapa, Riverhead and three teams - Pirates, Power Board and Helensville - all from the Helensville township.

Later -on the 18<sup>th</sup> September 1930 the Auckland Star reported that the Auckland Rugby Union had agreed to the request of the Kaipara Rugby Union to be affiliated to the Auckland Rugby Union. The application to the Auckland Rugby Union was made, as Whangarei was considered inconvenient as a headquarters.

### PAPERSPAST

[Papers Past Home](#) [Introduction](#) [Search](#) [Browse](#)

Papers Past > Auckland Star > 18 September 1930 > Page 17 > RUGBY FOOTBALL.

 **RUGBY FOOTBALL.**  
Auckland Star, Volume LXI, Issue 221, 18 September 1930, Page 17

[About this newspaper](#) [View computer-generated text](#)

## **RUGBY FOOTBALL. AUCKLAND UNION MEETS. KAIPARA'S AFFILIATION. FIXTURES FOR SATURDAY**

It was decided at a meeting of the Auckland Rugby Union last night that it would advise the Kaipara Rugby Union that its request for affiliation as a sub-union would be granted, provided the North Auckland Union had no objection.

Permission was granted to the Otahuhu Club to travel to Helensville next Saturday.

The following ground officials were appointed for Saturday:—Point Chevalier, Mr. Matthews; Show Grounds, Mr. Addison; Grey Lynn, Mr. Galbraith.

It would appear that the Silverdale Club was invited and agreed at this point to join and play in Kaipara Union competitions.

In September 1931 the Auckland Star reported that the Kaipara Rugby Union held a dance that was attended by representatives from Silverdale, and that Silverdale were presented at the function with the Primmer Junior Knock-out Cup.

## PAPERSPAST

[Papers Past Home](#)   [Introduction](#)   [Search](#)   [Browse](#)

[Papers Past](#) > [Auckland Star](#) > [26 September 1931](#) > [Page 12](#) > [RUGBY UNION DANCE.](#)

### RUGBY UNION DANCE.

Auckland Star, Volume LXII, Issue 228, 26 September 1931, Page 12

[About this newspaper](#)   [View computer-generated text](#)

### RUGBY UNION DANCE.

An enjoyable evening was spent on Thursday last when the Kaipara Rugby Union held its first dance of the season. Visitors came from Silverdale, Riverhead, Kaukakakapa and Waimauku. The trophies won during the season were presented to the successful players, as follows: Kaipara Rugby Union Shield, won by Waimauku Club; Black and White caps, won by Waimauku Club; Cheshire Cup, won by Parakai team; Plummer Cup, for junior grade championship, won by United team; Primmer Junior Knock-out Cup, won by Silverdale team. Among those present were: Mrs. J. Vercoe, black georgette; Mrs. Thompson, black georgette and lace; Mrs. G. Duane, lemon satin over pink; Mrs. R. Beveridge, green satin; Mrs. Anderson, blue georgette; Mrs. HESSIE, flame net; Mrs. J. Morris, figured georgette; Mrs. A. Plummer, pink georgette; Mrs. H. Pengelly, red crepe de chine; Mrs. S. Lound, mauve satin; Mrs. J. Stanaway, navy blue georgette and lace; Mrs. W. Rimmer, black georgette; Mrs. Lewis Little, red velvet; Mrs. C. W. West, black georgette; Mrs. A. Kerr-Taylor (Waimauku), figured georgette; Mrs. Morpeth, red chenille georgette; Mrs. J. Smith, cyclamen velvet; Miss B. Hunter, white satin; Miss Ruth McMurdo, pink satin; Miss Jean Hill, turquoise blue georgette; Miss Lorna Smith, cameo

*A year later the Auckland Star reported on the Kaipara Union annual dance held at Helensville.*

A successful dance was held on Thursday evening, when the Kaipara Rugby Union held its second annual dance in the Star Theatre, Helensville. Visitors from Silverdale, Wellsford, and other surrounding districts were present. The presentation of trophies won during the season was made. Among those present were:—Mesdames H. Pengelly, T. Keane, C. Keane, J. Morris, Logan Smith, H. McLeod, A. McLeod, D. Norton, Travers, W. Jack, V. McMurdo, J. Vercoe, D. Megson, N. Olsen, and Misses Jean Ellett, J. Narbey, M. Nicholls, Joan Rimmer, B. McLeod, Nancy McLeod, E. Bridson, A. Davis, G. Storey, N. Rigney, L. Gaven,<sup>in</sup> U. Watson (China), R. McMurdo, S. Hunt, E. Moffat, E. Brown, L. Hick,<sup>Li</sup> Jean McLeod, N. McMahon, C. Jack, S. Jack, Una Norton, I. Menzies, P. Skulander, E. Nevill, J. Clifford, R. Cooper, Jean Hill, Lorna Smith, Marjorie Coomb, D. Kingston, D. McLeod, G. Gee, B. Gee, M. Cox, C. Clarke, Mollie McLeod, E. Taylor, E. Frost, Joan Phillips, M. O'Donnell, A. Taylor. \* \* \*

In 1932 Harry Skulander and Frank Neville while playing for Silverdale were presented with Kaipara Union representative caps - the first recorded representative honour awarded to Silverdale players.



Newspapers of the time - particularly the Auckland Star - carried results of weekend matches including those of the Kaipara Union.

## PAPERSPAST

Papers Past Home Introduction Search E

Papers Past > Auckland Star > 4 June 1934 > Page 13 > THE RUGBY LAD

### THE RUGBY LADDER.

Auckland Star, Volume LXV, Issue 130, 4 June 1934, Page

► About this newspaper    ► View computer-generated text

## THE RUGBY LADDER. |

### HELENSVILLE.

Kaukapakapa 17, beat Parakai 11.  
Helensville won by default from Waimauku.

Juniors.—Parakai 25, beat Huamai 0;  
Silverdale 6, beat Helensville 3; Kumeu 37,  
beat Waitoki 0. 4 June 1934

Papers Past — Auckland Star — 11 June 1934 — RUGBY WINNERS.

Seniors.—Helensville 3, drew with  
Kaukapakapa 3; Parakai 57, beat Wai-  
mauku 0.

Juniors.—Helensville 8, beat Waitaki 3;  
Kumeu 17, beat Parakai 3; Silverdale 23,  
beat Huamai 0.

Papers Past — Auckland Star — 24 June 1935 — GAMES IN THE PROVINCE.

matamata, Carlson converting. In the second  
half Bush converted a try by Miles, and  
Carlson converted a penalty try for  
Matamata.

### KAIPARA.

Seniors.—Helensville 6, beat Parakai 3;  
Silverdale 0, drew with Kumeu 0.

Juniors.—Woodhill 11, beat Parakai 5;  
Kaukapakapa 14, beat Helensville 3;  
Kumeu 50, beat Silverdale 0.

In August 1935 a team list was published of players to represent the Kaipara Union in a match against Auckland (Senior B), which included Harrison, Hicks and Kelsey from Silverdale.

Papers Past — Auckland Star — 2 August 1935 — RUGBY.

### AUCKLAND V. KAIPARA.

Teams for Rugby representative match  
to be played at Helensville to-morrow:—

Kaipara.—Hanson (Parakai) M. McLeod  
(Parakai), A. Dye (Kaukapakapa), Harri-  
son (Silverdale), Lysaght (Kumeu), Vause  
(Helensville), Hicks (Silverdale); Jordan  
(Kumeu), Reber (Kumeu), V. Lodge  
(Helensville), Hill (Parakai), Strong  
(Helensville), Moyle (Helensville), Pea-  
cocke (Parakai), C. Keene (Parakai).  
Reserves: F. Smith (Parakai), G. Lodge  
(Helensville), O. Kelsey (Silverdale).

Auckland (Senior B section).—T. Waters  
(North Shore), Charlton (University),  
Hurling (Parnell), Finlayson (North  
Shore), Chater (University), F. Harkin  
(Manukau), Chambers (Eden), Silcock  
(Training College), J. Smith (Eden), Du  
Temple (North Shore), Paddy (Manukau),  
H. Way (Manukau), McNicol (Training  
College), Massey (North Shore), W. Smith  
(Manukau), J. Craig (Parnell), K. Biggs  
(Manukau), Wood (University), S. Cun-  
ningham (North Shore).

Around 1945 the Kaipara Sub-union purchased eight and three-quarter acres of land in Helensville as the home ground of the sub-union, and in 1947 the Kaipara Sub-union entered a team in the Auckland RFU Provincial Shield Competition.

Minutes of the Kaukapakapa Club indicate that the Kaipara Rugby Union were not happy with their relationship with the Auckland Rugby Union to whom they were affiliated. In particular there were issues relating to the organisation of junior rugby. In July 1955 a proposal was tabled at a meeting of the Kaipara Rugby Union – that the Union should affiliate with the North Auckland Rugby Union, however his motion was defeated at the next Union meeting.

In 1958 the Kaipara Rugby Union made an application to the Auckland Rugby Union for financial aid. By this time a number of clubs had disbanded and/or merged with other clubs. There appears to have been speculation at the time that the Kaipara Rugby Union would break-up, however it was decided it would be best to hold the remaining clubs together.

In September 1962 the chairman of the Kaipara Rugby Union Mr. W. Yelavich visited each club and presented a paper which had been tabled at a meeting of the Kaipara Rugby Union relating to the future of the Kaipara Rugby Union. The paper appears to have proposed the disbandment of the Kaipara Rugby Union and following the re-organisation of the clubs, that an application is made to the Auckland Rugby Union by these re-organised clubs for direct affiliation.

A meeting was then held in February 1963 at Silverdale to *“organise a combined club in the north of the now recessed Kaipara Rugby Union. The clubs represented were Silverdale, South Head and Kaukapakapa. Mr. Trevor Hick was elected Chairman and the meeting discussed team entries, travelling and training etc. Mr. W. Yelavich who was also present said that he thought the Auckland Rugby Union would zone junior boys in to the North Shore area. The Silverdale Club was to apply to the Auckland Rugby Union for entry into the Union.”*

It is known that the following Silverdale players represented the Kaipara Rugby Union and that many were awarded union caps:

1928 – 32	F. Neville	1949 – 51	D. Armstrong
1931 – 39	H. Skulander	1952 – 54	C. Earwaker
1935 – 37	T. Harrison	1952 – 54	W.Earwaker
1935 – 38	S. Thorburn	1952 - 54	B. Foley
1935 – 38	T.W. Hick	1953 - 54	B. Harper
1935 – 39	O. Kelsey	1952 - 54	S. Cartwright
1936 – 38	H. Dalbeth	1956 - 60	S. Flexman
1949 – 51	D. Armstrong		

## 7: *Silverdale Club rugby – moving forward:*

The following photograph is the oldest of a Silverdale team – taken in 1936/37. The player seventh from the right is Harry Skulander.



Silverdale continued to play in the Kaipara Union competitions throughout the 1930's, 1940's, and the 1950's - until 1962.

The first listed Silverdale team in 1930 was: *Eric Guy, Frank Neville, Bill Hawken, H. Glander, Noel Percy, V. Benny, Eric Bridson, Alf Clamo, Harry Dalbeth, Tommy Hillman, Y. Bridson, Jack Bridson, Harry Skulander, Roy Moffat, Fred Moffat, Frosty Rogers, Ram Kelsey, Dave Barnard, J. Smales, Paddy Potaka, Jack Burns, Trevor Hick, Ivan Smith, Cecil Smith. Doc McClennan*

It is recorded that the driving force in this particular era was Oscar Benny the local butcher. He recruited Trevor Hick, Jack Carron, Paddy Potaka and the Fawcett brothers – pine millers who were all keenly interested, and it was decided to enter a team in the 'junior' competition. Although the first year was not a great success the next three years were ones of achievement – in the second year of the competition winning the Primmer Junior Knock-out Cup.

At this time the Kaipara Sub-union had its headquarters in Helensville and comprised clubs such as Kaukapakapa, Helensville, Riverhead, Kumeu, Hobsonville/Whenuapai, Parakai, Glorit, Albany and ***Silverdale***.

As with most clubs, ***Silverdale*** went into recess in 1939 - at the start of WW2, and re-formed again in 1945 following the end of the war. The club had a senior and a 3<sup>rd</sup> Grade team (20 years and under) entered in the Kaipara Sub-union competitions. However, the sub-union is reported to have functioned with difficulty at this time.

Clubs playing in the Kaipara Sub-union competitions at this time were: Kaukapakapa, Helensville, Parakai, Riverhead, Kumeu, Waimauku, Albany, Whenuapai/ Hobsonville, Silverdale and later a junior team from South Head.

With the return of players from the forces, all sub-unions appear to have had a good 1946. Not having a 'home' ground, Silverdale then played their home games at a number of local paddocks including in the 1950's on Sid Heathcote's paddock (now the War Memorial Park) – with teams changing behind a haystack. When training took place, it is remembered that it was often held on the paddock now occupied by Pak n' Save.

Getting to away matches continued to have its problems for most 'country clubs'. However Silverdale was greatly assisted by Neville Brothers – who continue to be supporters of the club today – who provided transport before and after the war to get Silverdale (senior) players to games. *It is recorded that Frank Neville would first collect cream from local farms, deliver the cream, empty and steam-clean the cans – then pick up four bench type seats from the Silverdale Hall before going to an agreed pick-up point (most often the Wade Hotel) to collect the team to take them to and from their game.*

It is remembered with affection that a dance was held on most Saturday evenings at the Silverdale Hall. These 'after match' functions were organised as a fundraising venture and run by Mrs. Thelma Kelloway who arranged supper, organised the services of a band (often featuring the *Oceanairs* in which Gary Hick, Trevor Hicks' son played), and ensured that the function was 'well behaved'.

The period following 1946 saw a rapid growth and the addition of a number of new teams. A 5<sup>th</sup> Grade was added (10st 7lb and under) in addition to the 3<sup>rd</sup> Grade (under 20's).

Club colours at that time were green jerseys with yellow collars.

In 1945 Silverdale finished runners-up in the Kaipara Senior Competition. Players were: *Dave Armstrong, Murray Hick, Pat Schollum, Alf Poynter, Arnold Brokenshire, Sep Thorburn, Des Bawden, Ivan Smith, Des Swan, Selwyn Drinnan, Trevor Hick, Cecil Jack, Charlie Earwaker, Sonny Cross, Fred Moffatt, Jackie Loudon.*



***The club holds a collection of early team photographs – the earliest being 1936 (recently given to the club by Jenson Skulander); Many of the team photographs are displayed on the clubroom walls and some stored in the club archives.***

## **8: Silverdale War Memorial Park:**

In 1946 following the end of WW2 rugby was played at what is now the War Memorial Park. A first pavilion was built by Dave Earwaker on the site of what is now the tennis club pavilion. The pavilion provided the luxury of three changing rooms and showers.

This saw the start of the development of the Silverdale War Memorial Park that continued throughout the latter part of the 1940's and into the 1950's.

The end of WW2 and the consequent disbanding of the Silverdale Company of the Home Guard appears to have provided the nucleus of a War Memorial Fund. Home Guard Company money was donated to the Silverdale Returned Services Association and members of the RSA planned to add to the fund to erect clubrooms. A corner section opposite the Wade Hotel was leased and metal bought onto the site.

However the clubroom scheme did not meet with the complete approval of the returned servicemen of the district, and a number of them, headed by Pat Schollum dreamt of turning the Silverdale Hall into the Silverdale War Memorial Community Centre. They were deterred from this project only when it was found that the cost would be prohibitive.

Pat Schollum, supported by Alf Poynter and Trevor Hick then focused upon acquiring land and creating playing fields for the local community. A member of the association – Alan Watson, was deputed to approach Sid Heathcote the owner of a farm in the district – a farm on which games of rugby had been played for many years, with the view to acquiring some land.

It is understood that Sid Heathcote stated that if he ever sold the farm it would only be for the purpose for which Alan Watson and his associates had in mind – that it might become a memorial park.

On 1 November 1949, the Association completed the purchase of 29 acres of land (now the War Memorial Park) from Sid Heathcote for the sum of £2000. The enthusiasts then addressed themselves to raising funds for improvements, and in all £1544 was raised. Later that year the park was vested in the Waitemata County Council and the funds became available for purposes of subsidy.

In 1950 the first Silverdale War Memorial Park committee was formed. Members appointed were: *Pat Schollum (Chairman), Bob Seaman, Alf Poynter, Joe Willoughby, Tom Aro, Dave Earwaker, Trevor Hick, E.J. Jonkers, E. Fuller, Alf Brinkman, Sid Heathcote. A.J. Stevens.*

Plans were laid immediately for a substantial programme of improvements. These were estimated at £12,000 and included two rugby fields, one hockey field, two tennis courts, a concrete cricket pitch, bowling and croquet greens and a pavilion.

Frank Bartlett planted the boundary trees.

The community sports ground initially had a cowshed as a changing room and a water trough for after match bathing. A modest all-sports pre-fabricated pavilion was built adjacent to the War Memorial monument, which was frequently used by the club for after match functions.

The War Memorial Park was officially opened in 1953. Hon. T. Clifton Webb, Member of Parliament for Rodney was to have opened the new facility, and a big occasion had been planned. However the day brought extremely heavy rain.

Reluctantly the opening was postponed. The weather conditions for the following Saturday was equally poor, but the opening went ahead – wind and rain notwithstanding. Mr. Duncan Rae M.P., deputising for his colleague.

On his retirement, Joe Bawden who had chaired the War Memorial Park Board for many years handed the documentation relevant to the acquisition and establishment of the War Memorial Park – protected reserve – to Bill Earwaker for safe keeping. This documentation is now lodged in the archives of the RSA.

Over the ensuing years the Silverdale War Memorial Park (SWMP) continued to be overseen by the War Memorial Parks Board, with user sports and bordering organisations meeting periodically to liaise with Council to facilitate the usage of the park in accordance with the requests of the returned servicemen/women and to ensure smooth running of the park for user sports. Bill Earwaker continued to act as a historian for the Parks Committee, with a keen eye, to ensure the original purpose for the War Memorial Reserve was preserved. The main user groups over this period were;

- Silverdale United Rugby & Sports Club
- Silverdale Tennis Club
- Silverdale Rotary Club
- Silverdale Bowling Club Inc.
- Silverdale Returned Servicemen's Assoc. (RSA)

The RSA relocated to new premises in Viponds Road, Stanmore Bay in..... and the RSA building was purchased by the Silverdale Rotary Club – the commemorative gates and War Memorial remained on the site.

Silverdale Bowling Club went into remission in October 2009, as a result of low membership numbers and ongoing building maintenance costs. It should be noted that The Silverdale Bowling Club Inc. in correspondence dated 8<sup>th</sup> September 2009 accepted an offer by the Silverdale United Rugby & Sports club Inc. to become an affiliated member of the rugby club, but this did proceed and was rescinded in the October, because of insufficient members to operate the running of the bowling club events.

With the exit of the bowling club, the Head lease of the bowling club premises was transferred to the Nippon Judo Club with a sub lease to the Air Training Corps – No 5 (Rodney District) Squadron.

On the 16<sup>th</sup> September 2016 the Council lease was withdrawn to these users because of concerns regarding sewerage, asbestos, maintenance and structural concerns in the building and surrounds.

At the time of this update (September 2017) the Bowling Club building remains vacant and is awaiting a Local Board review of Reserves prior to a decision being made as to its future.

It should be noted the Silverdale United Rugby & Sports Club Inc. together with the Judo Club and the Air Training Corps entered into discussion and submitted submissions to the Hibiscus & Bays Local Board during 2016, together with new building plans for the old Silverdale Bowling Club site.

The Rugby Clubs Boards thinking being, to provide additional space for storage, and a player's gym and on the external area netball training courts or a half field training field.

A new user of the SWMP – Hibiscus Mens Shed Trust was granted two community leases and a licence to occupy areas in February 2016.

This decision was met with some concern as it was granted without “seeking expressions of interest” from long term users of the SWMP (Local Board minutes 16/12/15), although it was publicly notified.

In 2001 the then, Rodney District Council issued a Reserve Management Plan (update of 1989 Plan) for the SWMP. It appears that the general content of the Reserve Management Plan was accepted by the Parks Committee, which included a structure for management of the Reserve – under this arrangement the Parks Committee were delegated ‘administrative responsibility’, with Council being responsible for overall management.

In hindsight some of the wording in the document was considered contentious, in particular as to the transfer of the Reserve in 1949 to the Waitemata County Council. Historical documents record the transaction as being “vested”, whereas the Reserve Management Plan records the transfer as ‘sold’.

In 2010 Rodney District Council was amalgamated into one ‘greater’ Auckland Council. As a result of the decision relating to the Mens Shed Trust leases; the interest by users in establishing a new multi-purpose building on the old Bowling Club site; and the Reserve being used as a storage/dumping area for Council the Parks Committee actively advocated to the Hibiscus & Bays Local Board regarding the Reserve.

It became somewhat of a surprise to long term members of the Parks Committee to find that with the amalgamation of Councils, the Parks Committee responsibilities were reduced to an ‘interest group’ – (Hibiscus & Bays Local Board correspondence 13/12/2016) – with no meaningful responsibility at the Reserve.

## **9:    *The Auckland Rugby Union:***

East Coast Bays and Albany clubs - because of their proximity to Auckland had long expressed a desire to break away from Kaipara and to join and play in Auckland. Requests also came from Hobsonville-Whenuapai and this led to a change in the structure of the Kaipara Sub-union, with the Auckland RFU taking over the direct running of the Kaipara Sub-union.

Although the Kaukapakapa Club Management Committee minutes of the time reports that the Kaipara Sub-Union delegates were not happy with the request, in 1958 the Kaipara sub-union granted East Coast Bays dispensation to play in the Auckland competition for five years.

Also around this time there were junior players who wished to play in the Auckland competitions; and as a consequence the Kaipara Sub-union appointed both senior and junior delegates to the Auckland management committee. Dispensations were then only granted to players with the approval of the Kaipara association.

Reports refer to some of the Kaipara Sub-union clubs having difficulty fielding teams for the 1963 competition. The sub-union at this time was not seen to be strong.

The Auckland Official History for 1963 reports that *'Kaipara the only remaining Sub-union of the Union went out of existence when the clubs in the area combined into two new clubs – Silverdale and Western United – and affiliated direct with the Auckland Union, entering teams in the senior and junior competitions.*

Wally Yelavich recalls that the Auckland Rugby Union were concerned about the difficulties the union was having at that time, but anxious that the union should try to resolve its own problems if possible. Following a series of meetings and consultations with clubs, the management of the Kaipara sub-union made a proposal to the clubs that the sub-union be disbanded and that prior to the 1963 season the remaining clubs amalgamate into two 'strong and viable' clubs that could then apply for direct affiliation to the Auckland Union. It was proposed that Riverhead, Helensville, Kumeu and Hobsonville/Whenuapai reform into Western United RFC to be based at Riverhead and that the 'northern' Kaipara clubs, Silverdale, Kaukapakapa and South Head amalgamate as Silverdale United RFC - which they did - with Helensville and Silverdale maintaining their identity. Club jersey colours were amended in recognition of the amalgamations. For example Silverdale's jersey was amended to include a large hoop of red at the midriff and a black collar.

The Auckland Star (21<sup>st</sup> March 1963) reported:

*The Auckland Rugby Union competitions will be boosted by 25 teams for the 1963 season with the admission of two new clubs. Western United and Silverdale United from the Kaipara Sub-union, which has gone into recess for one year. Western United will be composed of players from Riverhead, Kumeu, Helensville and Hobsonville. Players from Silverdale, Orewa, Kaukapakapa and Whangaparaoa will make up Silverdale United.*

*"If we are not accepted it means no rugby for 200 to 300 players" said Mr. Wally Yelavich on behalf of Western United at last night's management meeting. "We don't expect teams to travel as far as Helensville, but are hopeful of getting home matches*

*at Kumeu and Riverhead. We can enter 14, possibly 16 teams from Senior B to 15<sup>th</sup> grade."*

*Mr. T. Hicks (Silverdale) said "Travel is our biggest problem, but we will do our best to field 10 teams from Senior B to 15<sup>th</sup> grade. If we have to travel to thye city, the South Head boys – all juniors – will have to drop out. Its just too far for them to go."*

*The management committee chairman Mr. Ron Burk, said "It's the union's duty to see that the South Head players get rugby."*

*Trevor Hick (Silverdale) and Wally Yelavich (Western United) were elected to the Auckland RFU management committee for 1963 competitions.*

In affect the Auckland Rugby Union in 1963 appears to have disbanded the Kaipara Sub-union with a proposal that the remaining clubs amalgamate into two 'strong' clubs that could then apply for direct affiliation to the Union.

At this point in time the club regularly fielded twelve senior and junior teams.

Seven years later in 1970, Helensville had broken away from Western United, and returned to its Helensville base as Helensville Districts RFC.

## **10: Silverdale RFC to Silverdale United RFC:**

A meeting was held on 9<sup>th</sup> February 1963 at which Silverdale 'United' was established in order to satisfy the requirements of the Auckland Rugby Union for direct affiliation. Subsequently Silverdale United RFC was granted direct affiliation to the Auckland Rugby Union.

Records show that those present at the meeting were:

*Trevor Hick, Graham McLachlan, Les Honey, Ralph Adams, Rex Drinnan,  
Joe Bawden, Trevor Hyland, Graham Bird, Ron Brown, Henry Liddington,  
Andy Srhoj, J. Forest, Ian Hellyer, Tony Berdinner, Hugh Dunning, B.  
Meikle, Arthur Flay, Don Blampied*

Mr. R. Garnham president of the Kaipara Sub-union was also present.

From 1964 onwards and until the formation of the North Harbour Rugby Union in 1985, Silverdale is recorded in the records of the Auckland Rugby Union.

Silverdale United played as 'Silverdale' in the 1963 Auckland Senior B competition. The draw for that first season was:

27 April 1963	Mt. Roskill
30 April	Navy
4 May	Papatoetoe
11 May	TePapapa
18 May	East Coast Bays
25 May	Pt. Chevalier
1 June	Howick
3 June	Parnell
8 June	Eastern Suburbs
15 June	Tamaki
22 June	Western United
29 June	Eden

Pre 1963 team photographs show that C.K. (Colin) Smith was the club President in 1954 and possibly for a number of years prior to 1954. Also from team photographs of the time we know that Trevor Hick served as President in 1955 and continued to serve for a further seventeen years. It is also understood that Trevor Hick served as President before Colin Smith's period of tenure, but it is not known precisely when. Alf Tait is known also to have served a spell as President – presumably prior to Colin Smith.

Sid Heathcote from whom land was purchased on which to build the club was Club Patron during the 1950's and 1960's.

## **11: *Kaukapakapa Rugby Club:***

No written records detailing the foundation of the Kaukapakapa club survive, however it is known from an Auckland Star press report of July 1900 that a club had been formed and had played games against Helensville and TePua, and that the Kaukapakapa club had been a foundation member of the Kaipara Rugby Union which had been founded in May 1905.

It would appear that the development of a railway line north from Auckland had a significant impact upon the development of rugby in this area. Timber interests around the Kaipara harbour encouraged the building of a rail line that extended to Helensville in 1875. A branch line was built to a wharf at Riverhead. Later the line was extended further north reaching Kaukapakapa in 1898. Although travel continued to be difficult, the rail line clearly assisted contact between communities and the development of rugby on the west coast. On the east coast travel continued to be difficult for two or more decades.

Kaukapakapa games were played in Drinnan's paddock; on the site of Eric Colgan's present residence; in a field behind Dye's slaughterhouse; and for many years on a farm paddock then owned by Morrie Webster's (later owned by Basil Jones) close to the railway line.

The use of local farmland was not seen as a long-term solution, and in 1960 it was decided to investigate the possible use of Sinclair Park. It was agreed that the club would locate to Sinclair Park as soon as work was completed to the grass surface. At the 1961 AGM the club decided to build a new changing shed, and in 1962 the move was completed.

The Kaukapakapa minutes of the April 1962's refer to discussions having taken place at a recent meeting of the Kaipara Sub-Union relating to playing fields. A proposal had been presented by the Hobsonville Club to lease Rugby Park in Helensville (owned by the Kaipara Rugby Union) to the Helensville High School Old Boys Rugby Club. It was suggested that if approved the HSOB would consider giving the Kaukapakapa Club free use of Rugby Park for odd games. It would appear that the proposal involved the Hobsonville Civilian Club paying a nominal £1 affiliation fee and having full voting power on the Kaipara Rugby Union. This proposal was discussed and condemned.

Teams travelled to early games by horseback – often fifty or sixty horses tethered waiting for the trip home. Hospitality was a strong feature. Players were well fed and after match evenings often ended with a sing-a-long; many players arriving home in the early morning.

Players also used the train, travelling to the nearest station and walking the remaining journey – and back again. In view of the difficulties of travel, it was also common for teams to meet halfway, for example at Wainui if Silverdale were the opposition.

After the war - as with the Silverdale club at the time - getting to away matches was not easy, and as with Silverdale, Kaukapakapa were fortunate in having in Neil Barr a supporter who regularly provided transport. In later years teams travelled by George Rex's bus.

It is known that Kaukapakapa RFC was a foundation club of the Kaipara sub-union. An early newspaper report – Auckland Star 17<sup>th</sup> July 1900 – quotes:

*Kaukapakapa Football Union: A football union has been established between Helensville, TePua and Kaukapakapa, and three matches have already been played. Kaukapakapa is leading by one win.*

## K. K. K. Senior Rugby Team, 1946.

Winners of Cheshire Cup & Runners up in Points Competition.



Back row - A. J. Stevens (Pres.), T. Gibson, H. Wright, R. Campbell, D. Holwell, A. Dye, F. Millar, B. Drinnan, F. Dormer, A. Webber, L. Drinnan (Patron).  
Front row - P. Poland, (Club Captain), T. Smith, P. Smith, A. Dormer (Vice Capt.), B. Gallagher (Capt.), R. Drinnan, P. Dobbyn, N. Holwell, W. Rawiri (Coach/Selector). Mascot - M. Cossey.  
Inset - R. Shanks, W. Dye, T. Gardner.

*A number of photographs of Kaukapakapa Rugby are displayed on the clubroom wall and in the clubs archives – the oldest being the 1946 photograph above:*



### *Kaukapakapa township*

- A: *Second rugby field on property of Morrie Webster*
- B: *First rugby field – on property of Robert Drinnan*
- C: *Third rugby field – Sinclair Park*

made of £21 to the Silverdale United Football Club to It is noted that the Kaukapakapa Club played in jersey colours of red and black hoops, and that in 1957 the club determined that their club blazer should be Royal Blue with a red monogram with white lettering.

Archives records of the Kaukapakapa club from the 1940's are held at the Silverdale clubrooms and include excellent handwritten minutes of annual general and management meetings. These records terminate with the amalgamation with Silverdale in 1963; the final meeting of the club being held on the 1<sup>st</sup> April 1970.

Among the many members who were active in the running of the club in the 1940's and up to the 1963 amalgamation were: *Peter Dobbyn, Les Drinnan, Dick Jordan, Ken Patten,*

*Harry Dye, Pat Robertson, Peter Drinnan, Keith Shaw, Peter Dormer, Ian Hellyer, Neville Holwell, Patrick Poland, Hugh Dunning, David Holwell, Tim Smith and no doubt many more.*

The minutes of the meeting of the Kaukapakapa Club held just prior to amalgamation (16 April 1963) chaired by Ian Hellyer mentions that a grant was equal their starting balance. The officers of the club for the 1963 season were elected 'en bloc' to keep the club operational during the recess of the Kaipara Rugby Sub-Union. *At this meeting the outgoing President Ian Hellyer gave a brief report on the seasons activities and of the future of rugby in the area, stating that now the Silverdale United Club was formed and would be serving the district it was up to all in the interest of rugby and the young people to support it as much as possible.*

A final meeting of the Kaukapakapa Club was held at the home of P.G. Dye on the 1<sup>st</sup> April 1970, chaired by Ian Hellyer. *It was agreed that the trophies belonging to the club be passed to the Silverdale United Club for competition. It was also agreed that a set of good posts be purchased from the funds still held by the club (\$210) to be erected at Sinclair Park. Any monies left over to be used to procure other gear for the use of football on the park so that all the liquid assets of the Kaukapakapa Football Club that is being wound up are used. The Chairman Ian Hellyer ended the meeting stating that the books be closed from the date of the meeting and handed to the Silverdale United Football Club for safe keeping.*

## **12: New Clubrooms:**

As has already been stated, the Silverdale club had no permanent home; playing their home matches at a variety of paddocks (a requirement appears to have been that there should be a creek close to hand for after-match bathing). Various buildings/huts were also used for after-match functions; among them a pre-fabricated building which was on the site of the old RSA building (now the Rotary Club building). This led to a powerful desire to have a permanent home. Indeed fundraising activity had been started by club members in the 1950's with the aim of building clubrooms. Among other fundraising activities at the time was Trevor Hick's successful and still remembered campaign of holding 'chook' raffles at the Wade Hotel.

Although tribute is rightly given to Trevor Hick for the central role he played raising funds; it is recognized that a great deal of fundraising effort was undertaken by a large number of staunch club members; Arthur Flay, Ted Olliff, Hugh Dunning, Neville Holwell, Alf Gracie Graham & Trevor Bird playing key roles.

It should also be noted that following the amalgamation with the Kaukapakapa Rugby Club members of the Kaukapakapa club actively assisted in the fundraising activity for new clubrooms, with Neville Holwell and Rex Drinnan, both ex Kaukapakapa stalwarts taking central roles. The successful 'chook' raffle scheme was expanded to include the hotels at Puhoi, Kaukapakapa and Waiwera, and club members, including ex Kaukapakapa members played an active role in securing the generous co-operation of these hotels.

It is understood that as many as 200/300 chooks would be purchased from chook suppliers - especially from club stalwart John Keighley who managed a chook farm on Wainui Road - killed and gutted by club members and then sent to Horry Bevan who stored them in his freezers. Kevin Olliff recalls that not only chooks were sold but that he was involved in a lucrative trade in chook 'droppings' delivered in sacks to local clients. Later flounder and crayfish were added as raffle prizes, as was 'pig in the barrow'.

Later John Keighley and family relocated to Wellsford and from there to Kaiwaka where he raised money to build the Kaiwaka sports pavilion. As a passionate rugby man he went on to serve on the North Auckland Rugby board.

Trevor Hicks' 'chook' raffle initiative is remembered by the club - with a cabinet in the clubrooms containing a 'chook' acting as a permanent reminder of Trevor Hicks' extraordinary fundraising efforts on behalf of the club.



In September 1965 the club purchased two sections of land, adjacent to the War Memorial Park (2/5 of an acre) for \$1200 from Sid Heathcote, with the intention of building clubrooms and changing facilities.

Members fundraising efforts had accumulated £2000 towards the building fund, and in February 1967 it was decided to push ahead with the design and building in the expectation that further funding would be shortly forthcoming. On this basis Stuart Flexman organised the building design, and with two apprentices – Paul Browne and Stuart Jones he started building work.

Early work was very much 'hand to mouth' with Stuart Flexman and other members often providing materials so that work could continue. Further funds were forthcoming via a \$4000 interest free loan from the Auckland Rugby Union and through continued fundraising efforts.

The building fund continued to grow and the building continued. A further \$15,000 was loaned by the Auckland Savings Bank and \$13,000 raised from fundraising efforts.

The new clubrooms were completed in April 1968 at a total cost of approximately £60,000, and boasted a social hall, committee room, ladies powder room, catering facilities and eight changing rooms and showers.

It is essential that the generosity shown by club members of the time be recorded; without which the clubrooms would if built at all, have been a shadow of what was finally achieved. It is recognized that many members gave materials free of charge and their time and labour without charge to the club. At the 1968 general meeting, the club president Trevor Hick made particular reference to Stuart Flexman who had organized the building design and directed and physically built the clubrooms; to his staff Paul Browne and Stuart Jones and to the voluntary work from club members and of the generous help given by many local companies.

It is of particular note and much appreciated, that local farmers - such as Neil McCathie, donated much of the timber used in the construction. Logs were transported by Neville Brothers transport to McMillan's sawmill at Riverhead where it was milled and cut to Stuart Flexman's specifications, and blocks collected from Winstone at Three Kings – all without a cost to the club.



THE exterior of the Silverdale United clubrooms situated at Main Road, Silverdale.

The new clubrooms were officially opened on Easter Saturday 1968 by the Hon. W.J. Scott, M.P, the member of Parliament for Rodney and the Minister of Marine.



Two matches highlighted the programme. A Silverdale team played a team from Blockhouse Bay followed by a match between a Silverdale Presidents XV and a Pat Walsh XV. The day of celebration was rounded off with a grand ball.



## **14: Clubroom Extension:**

The early 1980's licensing law affecting clubs has been described as draconian. It was a peculiarity at this time that it was difficult for rugby clubs to obtain a bar liquor license, but that for certain other organisations – such as squash clubs – bar licenses were more readily obtainable.

Additionally it was understood at the time that squash courts had proven to be a successful means of generating income. It was determined to see if a possibility existed to utilize the more open bar license regulations benefiting squash clubs, to the advantage of the rugby club.

Barry Poynter the then Club Secretary felt that the club should be enlarged. Among other things it lacked sufficient changing rooms and showers, and it was felt that the main lounge was too small. The possibility of adding squash courts was seen as a means of generating cash flow to enable the other extension to be built.

The then club chairman Ross Hyde undertook an evaluation. He became aware that other rugby clubs – Ponsonby among them – were looking at ways to resolve the stringent licensing problem affecting rugby. Legal expertise was sought through a local lawyer Peter Ragg, following which it was proposed to extend the clubrooms and to build three squash courts. Ross Hyde and Barry Poynter arranged for Poole & Lewis a firm of Auckland architects to draw up plans, and a building application was made.

The initial response from the council was not promising. The council required the installation of a sewerage line from the club to the nearest point of connection that was at the Silverdale Bridge, and that this work be undertaken before a building permit was granted. This work that had not initially been foreseen required easement through a number of neighbouring properties and an additional estimated cost of \$40,000.

Murray-North a firm of Auckland based engineers/surveyors/architects were retained and briefed by Stuart Flexman to survey and design the sewerage line; and with the assistance and expertise of Peter Ragg approval was eventually sought and secured from neighbours in order to cross their land. Barry Poynter was deputed to progress the easement issue and to source a contractor to carry out the sewerage work. A Whangarei based company – Maunu Excavators carried out the work.

It was determined to push ahead with the extensions. Project fundraising had already started, but it was determined that if the project was to proceed something in the order of \$250,000 would need to be raised. Central to the fundraising was the sale of \$1000 ten-year memberships. It was hoped that 100 of these would be sold – but this proved extremely difficult. Eventually however the target was met, with eighty memberships being sold by Ross Hyde.

Additional to the sale of memberships, other fundraising by members continued. Trevor Hick with the assistance of Bryan Newman raised \$20,000 of funds through 'chook' raffles. At the same time application was being made to banks for a mortgage and to organisations for grants. Having been declined by a number of banks, a \$120,000 was eventually obtained from the Commercial Bank of Australia, and following considerable difficulty with the local council and the Lotteries Board; a \$45,000 grant was secured.

The project team of Trevor Hick, Stuart Flexman, Barry Poynter, Bryan Newman and Neville Holwell had sought tenders for the building work, but found that the quotations

were well above that estimated. It was decided to appoint Ray Ballantyne - under the direction of Stuart Flexman - as builder on a labour only basis, and in 1981 the clubrooms were extended. The extension comprised three squash courts with viewing galleries; associated changing rooms, and a lounge was also added. The main club lounge was also enlarged, and as planned additional changing rooms were added.

After considerable haggling the Bowling club, the Rodney Council and the RSA contributed approximately \$15000 between them towards the cost of the sewerage installation.



*Trevor Hick, the president of Silverdale United Rugby Football Club, prepares to turn the first turf for work on the clubroom extensions. With him is the local Commercial Bank of Australia manager, Mr. Bert Hole, and club chairman, Mr. Bob Munro.*

The new extensions were formally opened by local M.P., Don McKinnon in April 1981.

## **15: 1970's:**

The 1970's were a period of consolidation. The Hibiscus Coast was growing and along with its growth playing numbers increased at Silverdale. The Senior A team gained promotion to the second division in 1979. Coaches Ray Ballantyne and Dave Palmer took the club to new heights. The 1980's team went undefeated for thirteen games.

In 1979 the club fielded eleven teams coached by:

Senior A:	Ray Ballantyne & Dave Palmer
14 <sup>th</sup> Grade:	Brian Wilson
6 <sup>th</sup> Grade:	Bert Gribble & Jeff Hayes
10 <sup>th</sup> Grade:	Bob Gordon
15 <sup>th</sup> Grade:	George Cowper
11 <sup>th</sup> Grade:	Colin Burrige
16 <sup>th</sup> Grade:	Trevor Whiteley
12 <sup>th</sup> Grade:	Neville Kelleway
16 <sup>th</sup> Grade (Red)	Peter Elliott
16 <sup>th</sup> Grade (Blue)	Chris Taylor
13 <sup>th</sup> Grade	Mick Bennett

And in 1980 were able to field five senior and age group teams and eight junior teams.

Five players became centurions in the 1970's

- 1975 Lance Gribble
- 1975 Kevin Moffat
- 1977 Neville Bawden
- 1978 Greg Jelas
- 1979 Barry Hardy

***A number of members were made Life Members in the 1970 for their services to the club:***

- ***1974: Horry Bevan***
- ***1975: Norm Holwell***
- ***1976: Joe Bawden***
- ***1979: Ted Olliff***
- ***1979: Stuart Flexman***
- ***1979: Rex Drinnan***

## **16: The 1980's:**

In 1979 on-field results were starting to prosper. The senior team commenced an impressive winning run. Coached by Ray Ballantyne and ex Auckland winger Dave Palmer, who had moved to Stanmore Bay as a motelier, the team was winning more often than losing and was becoming a force to be reckoned with. The 1980 season concluded with an end of year trip to Australia for three games – and the team returned home undefeated.

Big things were now expected as the club began the 1980's, but tragically Dave Palmer was killed in the Erebus disaster. This was a huge loss for Silverdale as Palmer had been instrumental in achieving a change of attitude in the local players to *'wanting to and believing they could win'*.

Ray Ballantyne continued as senior coach in a lone role, but as the season progressed Silverdale pulled off the 'coup of the year.'

Legendary ex All Black coach Sir Fred (The Needle) Allen had retired to Stanmore Bay and had contracted a local concreter to lay a new driveway. That contractor – Greg Jelas – just happened to be the club's senior captain at the time.

At the end of a physically hard day on the end of wheelbarrows and shovels. Fred bought out a box of cold beers for the hardworking concreters, only for Greg to politely refuse because *"he had pre season footy training that night"*. Fred later confided that Greg's comment had struck a chord with him and that the local team must have a bit to offer.

So a couple of weeks later when a club official asked Fred if he could come down and be guest coach for the night. Fred agreed. So began the start of a 'golden era' for the club. For the rest of the season Fred never left. He was at the club every Tuesday & Thursday night and Saturday game day and the team achieved significant success including:

- Going 13 games undefeated during the 1980 season.
- Achieving promotion to the Auckland Union 2<sup>nd</sup> division (in those days the Auckland Union was comprised of 36 clubs split into three divisions).
- An appearance at Eden Park – beating Glenfield 8-0 with prop Jeff Mexon scoring 2 tries.

The national and Auckland press had a field day suggesting this was the start of a Fred Allen coaching comeback and heralded the success that Silverdale was enjoying. Auckland's 8 O'clock sports feature ran a story about how Fred had fired the team up so much that the hooker of the day ran onto the field without his boots on (the hooker – who shall remain nameless – denies this ever happened).

Opposition teams conceded afterwards that when they saw the 'Needle' turn up with Silverdale and heard his booming team talks through the changing room walls, they had lost the game there and then.

But Fred was never interested in any provincial or national comeback. He had merely helped out the local club after a chance impressionable meeting with the captain of the day – and at the end of the season Fred went back into retirement and his mates at the RSA.



*Sir Fred Allen*

By the end of 1981 most of that successful team had retired or moved away with work, and the team slipped back to the 3<sup>rd</sup> division until the creation of the North Harbour Rugby Union in 1985.

In 1985 Silverdale became one of the founding clubs of New Zealand's newest union. It was fitting that the first ever club game played in North Harbour was between old rivals Silverdale and Helensville. The game being played at Helensville on a Thursday night to kick-off the 1985 North Harbour club season. In a cliffhanger of a game life member Terry Wilson scored in the dying minutes to give Silverdale a 8-6 win and to become the first club victor in North Harbour rugby. For the next 24 hours Silverdale sat alone on top of the North Harbour premiership table.

Night rugby was trialed at the time but was later abandoned as clubs realised they were missing out on desperately needed revenue from Saturday games.

Touch rugby was introduced in the summer of 1986. Sixteen teams entered in the first year and twenty-four in the second. Team numbers continued to grow over the following years with the introduction of over 30's teams, mixed and ladies and juniors.



*1986's Touch winners*

The **1980's** also bought a number of new accolades for *Silverdale*.

- ***Silverdale's Under 19 team***, coached by Ray Ballantyne and Terry Wilson won the North Harbour Under 19 Championship – the first North Harbour championship for Silverdale. They played 22 matches, winning 21; and defeated Massey Under 19's 52-0 in the final.

Following their successful campaign the Silverdale Under 19 team visited Australia in September 1988 on a three-match tour.

RICHARD MOORS

Late Night Friday till 8.30p.m.

**HILLTOP BUILDING SUPPLIES**  
11 MAIN RD. SILVERDALE  
FOR ALL —  
• BUILDING SUPPLIES  
• HARDWARE  
• LANDSCAPING MATERIALS  
Phone 64-055 64-144  
"WELL DONE TEAM"

**FOR BARK TRELLIS and DISCOUNTED TIMBER**  
PHONE HBC 65-925  
PROUD TO BE SPONSORS OF THE UNDER 19s TOUCH RUGBY TEAM

**KGB**  
Kevin G. Boroevich  
BUILDING CONTRACTOR  
SPECIALIST IN:  
Light Commercial  
Housing  
Fencing  
Decking  
Driveways  
2 KAWAU ISLAND AVE  
WHANGAPARAOA  
PH (09) 421 47-48/9

**PLAYED 22  
WON 21  
DREW 1**

**POINTS FOR  
410  
AGAINST  
58**

- **1982: Glenn Brill** was selected for the New Zealand Under 17's.
- **1983: Kevin Boroevich** first became an All Black in **1983**, touring England and Scotland. He returned to the All Blacks in 1986 against France, and was again recalled – while a Silverdale player – for the All Black tour of Australia - becoming Silverdale's first All Black.



- **1988:** A number three field was added and training lights were installed.
- **1989:** saw the clubs premier team take a step forward under the coaching guidance of John McKittrick. Silverdale enjoyed success as a top-four club for the

next few years, and also realised its Sevens potential winning the North Harbour Sevens Championship and the prestigious Taupiri and Glenfield Sevens.

Also during the **1980's** a Restricted Grade and Senior C grade teams were introduced. Junior rugby continued to grow and to succeed, with sixteen junior teams playing in 1988.

- ***Centurions:***

*1980 Derek Mutu*  
*1980 Jeff Mexon*  
*1980 Tom Rawiri*  
*1981 Ian Sinclair*  
*1982 Revell Douglass*  
*1983 Kevin Brown*  
*1984 Gavin Ambler*  
*1984 Guy Jones*  
*1986 Scott Murray*  
*1986 Terry Wilson*  
*1987 Mike Field*  
*1987 Gary Brown*  
*1989 Don Holder*

***In recognition of their service to the club, four members were honoured with Life Membership in the 1980's:***

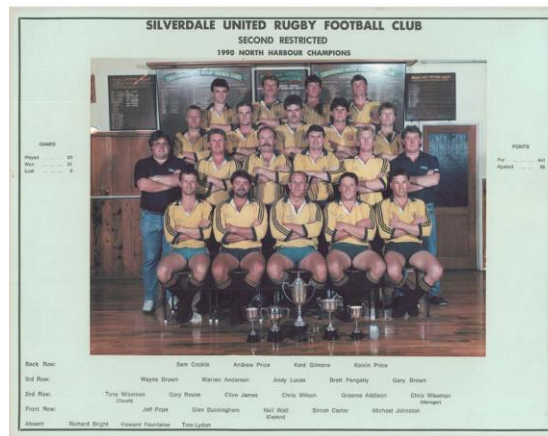
- *1982: Rob Munro*
- *1983: Sid Heathcote*
- *1986: Alf Gracie*
- *1988: Don Brown*

## 17: 1990's:

- **1990:** saw the clubs premier team take a step forward under the coaching guidance of John McKittrick and Terry Wilson. Silverdale enjoyed success as a top four club for the next few years, and also realised its Sevens potential winning the North Harbour Sevens Championship and the prestigious Taupiri & Glenfield Sevens.

In the 1990's Silverdale teams won five North Harbour Championships

- **1990:** *Silverdale Restricted* won the North Harbour Restricted Championship; coached by Tony Wiseman.



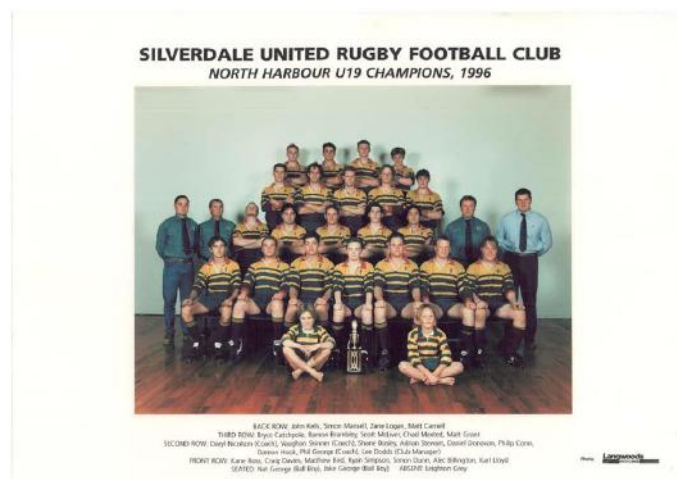
- **1992:** *Silverdale Sevens* won the North Harbour championship in 1992. Silverdale Sevens won the prestigious Taupiri Sevens beating Taupiri 25 – 16 in the final. Coached by John McKittrick and assisted by John Pippos



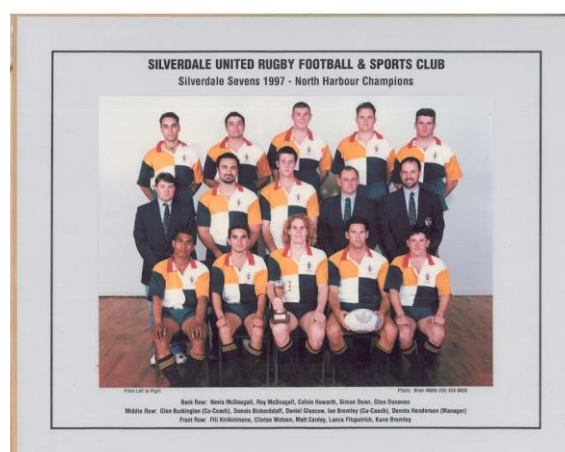
- **1994: *Silverdale Restricted*** won North Harbour Restricted Championship; coached by Mike Brown and Glen Buckingham.



- **1996: *Silverdale Under 19's*** won North Harbour Under 19's Championship. Coaches were Daryl Nicholson, Vaughn Skinner and Phil George.



- **1997: *Silverdale Sevens*** won North Harbour Sevens Championship, coached by Glen Buckingham and Ian Bromley.



**Also in the 1990's a number of Silverdale players achieved international honours:**

- **1990:** ***Kevin Schuler*** became an All Black in 1990 against Australia at Eden Park. He toured Canada as Captain of the New Zealand Development XV and was recalled to the All Blacks for their tour of Australia when he played five matches including the second test in Brisbane.



- **1992:** ***Geoff Alley*** was a mainstay of New Zealand Sevens in 1992 and 1993. After attending university in the USA he played for the USA Eagles. In 2001 Geoff coached Silverdale's Sevens team that won the North Harbour 7's championship, and in 2003 he was assistant Premier coach that won the North Harbour Premier Championship.



- **1995:** ***Glen Osborne*** made his All Black debut against Canada in Auckland and was first choice fullback during the World Cup in South Africa. He continued to play international rugby until 1999. He earned 29 All Black caps during his All Black career.



- **1997:** *Blair Foote* was a member in 1996 and 1997 of the Waikato Sevens that won the New Zealand Sevens Championship. In 1997 he represented New Zealand at Sevens tournaments in Fiji and France. He again represented New Zealand Sevens in 1998 in Fiji and Japan. Blair was a vital ingredient in Silverdale's winning of their first North Harbour Premier Championship in 2003.



- **1998:** *Lama Tone* gained his first cap for Samoa against Tonga in Sydney. He went on to play for Samoa on 26 occasions including the 1999 World Cup.

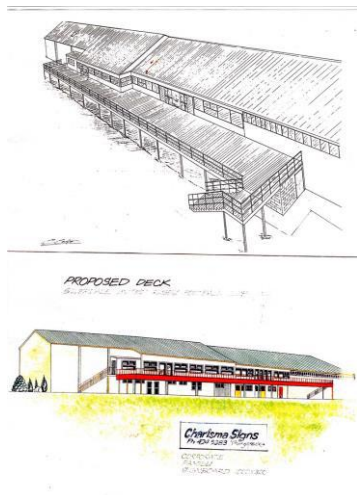


- **1992,** under the direction of the then chairman Trevor Hyland the club undertook to construct a large viewing deck along the length of the exterior of the club lounge. The first design proved unsatisfactory as it allowed only for a 1.5 meter height between ground level and deck. The original cost was estimated at around \$30,000 but came in finally nearer \$48,000.

Funding was organised by Trevor Hyland mainly through donations and sponsorship and the building work done by club volunteer labour, working bees and with the guidance and direction of Paul Browne, Marty Hyland and Trevor Hyland.

Although at the time the project received a 'luke-warm' support, it would be difficult to argue now that it has not proven to be a major success and benefit to the club.

Consequent to the building of the deck, the playing fields were re-configured with the number one field being laid out to run parallel with the clubroom and the deck, providing an outstanding spectator viewing area, and a great outdoor facility for the main club lounge and bar.



- **1998:** the club put together its first long term strategic plan with the aim of setting targets both on and off the field for the following five years, the intention being that the club should ideally have in place a rolling five year plan at all times.
- **1999:** *Silverdale*, under the guidance of John McKittrick who had returned to coach the previous year, reached its first North Harbour Premier final, regrettably losing 41-16 to Takapuna.

***Four club members were honoured as Centurians:***

- 1991                      *Grant Roberts*
- 1991                      *Ray 'JR' Wells*
- 1992                      *Bernie Duff*
- 1992                      *Phil George*
- 1995                      *Darren Scott*
- 1996                      *Thomas Waara*

***Four members were honoured with Life Membership in the 1990's in recognition of their service to the club:***

- 1992: *Neil McCathie*
- 1993: *Tom Rawiri*
- 1995: *Revell Douglass*
- 1999: *Paul Browne*

## **18: *The new millennium: 2000 – 2010:***

- **2000:** Early in 2000 the club embarked upon a number of projects identified in the recently completed 'long term' plan - aimed at an overhaul of the clubs facilities.

In 2002, implementation of the strategic plan continued with an overhaul of the changing rooms and showers completed. This was achieved with generous grants from the ASB Bank Trust and the Lion Foundation.

The main clubroom was redesigned, the bar enlarged adding improved chillers, and the kitchen was overhauled and new equipment capable of providing meals for large numbers was added. The toilets were relocated and the clubrooms redecorated – this done by club members, with teams being allocated specific areas of work. Life Members also contributed with the painting of window frames.

### **Further club members were awarded international honours:**

- **2000: *Matt Cardy***



- **2000: Lance Fitzpatrick** first represented the Cook Islands Sevens at the 2000 Manchester Commonwealth Games. He went on to become a regular selection of the Cook Islands Sevens and in 2001 he represented the Cook Islands at 15-a-side. In 2001 Lance became a Silverdale Centurion player. Lance was an important player in Silverdale's first Premier Championship win in 2003.



- **2000: Tim Cowley** made his debut for Samoa against Japan in Apia, playing four tests for Samoa in all. He also represented Samoa on the World Sevens circuit in 2000 and 2001. Tim was an important player in Silverdale's first Premier Championship win in 2003.



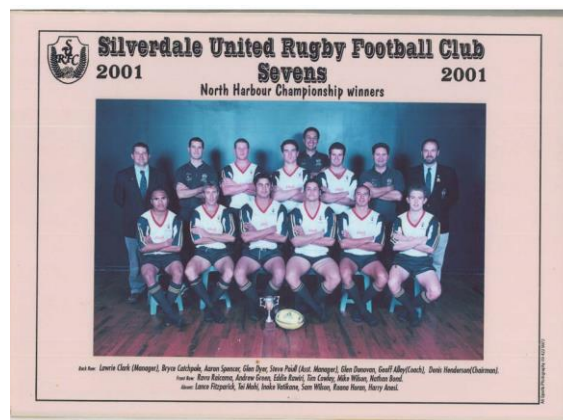
- **2000: Victor Ioane** represented the Cook Island Sevens at the 2000 Manchester Commonwealth Games, and went on to represent the Cook Islands at other World Seven circuit tournaments.



- **2000: Alex Magelby** was first selected for the USA as a loose forward in 2000, and went on to gain four caps. He represented the USA at Sevens at the Paris World Cup series in 2000 and went on to represent the USA in two World Cup tournaments in 2001 and 2005.

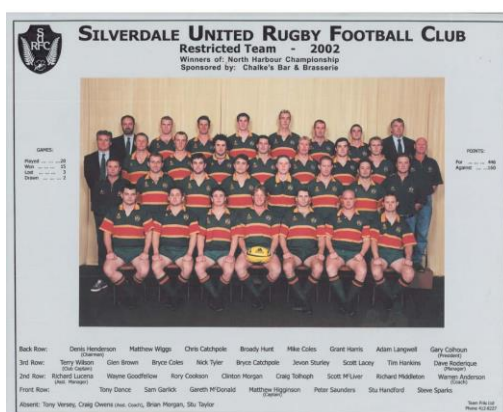


- **2001: Silverdale Sevens** won the North Harbour Sevens Championship, coached by Geoff Alley.



- **2002** bought a new coach to the Premiers (previously Senior A's) in the form of Charlie McAlister take the team to 3rd/4th in the competition. The Restricted grade won the 2002 championship and Senior 2 the plate trophy. The junior club was now the dominant force in North Harbour junior rugby with four championship wins in 2001 and three in 2002.

- **2002:Silverdale Restricted** won the North Harbour Championship in 2001; coached by Warren Anderson.

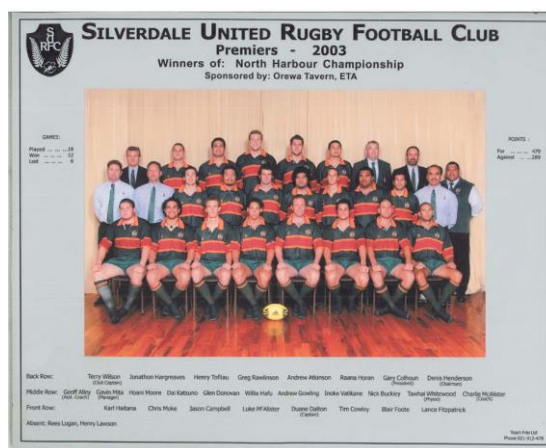


- **2002:** The Senior 2<sup>nd</sup>'s won the Plate trophy
- **2002:** The junior club was now the dominant force in North Harbour junior rugby producing four championship wins in 2001 and three in 2002.
- **2002:** Chris Moke represented New Zealand Under 19's
- **2002:** A new award was introduced – the **Green & Gold Award for Meritorious Service**. Initial recipients of the award were:
  - John McKittrick
  - Len Churchill
  - Ross Hyde
  - Trevor Hyland
  - Neil Watts
- **2003:** brought about the clubs long awaited Premier North Harbour Championship. Under the guidance of coaches Charlie McAlister and Geoff Alley the Premiers defeating North Shore at North Harbour Stadium 25-23.

A huge day for the community with 6000 mostly 'Dale' supporters roaring their boys home in a thrilling finish - Dale being down 9-14 at half time and turning the tables in the second half.

Players were: InokeVatikane, Willie Hafu, Karl Haitana, Rees Logan, Greg Rawlinson, Chris Moke, Blair Foote, Tim Cowley (run-on Captain), Andrew Gowling, Luke McAlister, Lance Fitzpatrick, Nick Buckley, Jason Campbell, YoheiShinomiya, Hoani Moore; Reserves: Simon McKennie, Andrew Atkinson, Henry Tofilau, Duane Dalton (Captain), Jonathon Hargreaves, Glen Donovan and Dai Katsuno.

Blair Foote, Lance Fitzpatrick and Glen Donovan had played in the 1999 championship loss to Takapuna; KarlHaitana and Chris Moke played for the New Zealand Under 19's that won the World Championship.



- **2003:** A further highlight of the season was the 35-7 defeat of Takapuna at Onewa Domain in the final game of the split-round.
- **2003:** Lawrie Clark was honoured with the Green & Gold Award for his services to the club.
- **2004:** Karl Haitana represented New Zealand Under 21's
- **2004:** Under the guidance of coaches Russell Maloney and Darryl Nicolson the Silverdale Colts achieved a club milestone - winning the first round shield and the championship.

Three other teams were championship runners up - Senior Firsts, Under 19s and Restricted, with the Premiers finishing 6th but winning the first round shield and retaining the Country Cup.

The junior club continued their dominance in North Harbour junior rugby winning JB2, JB3 and JB4 championships with JB5 runners up.

Luke McAlister and Greg Rawlinson turned out for the Blues and for North Harbour and Luke McAlister also starred in the NZ Colts team winning the IRB U21 world cup in Scotland.

Karl Haitana was also a NZ Colt. Luke McAlister was selected as an All Black for the end of season European tour however, he unfortunately did not play due to injury.

- **2004: Five Year Plan:** the club completed development of its second five-year plan, which included a commitment to retain the Silverdale War Memorial park as 'our home'. A concern was expressed that while junior playing numbers continued to grow, senior playing numbers appeared to be in decline.
- **2004: Re-branding:** As an extension to the above; in October under the direction of the then Director of Senior Rugby Terry Wilson, a working group was established with a aim of evaluating the benefit of re-branding the club, and producing a proposal and design options.

At that time it was felt that the clubs feeder population was no longer just from Silverdale but from a broader area, and that there was a need for an additional logo/ theme to identify with.

At the same time the club did not wish to abolish the Silverdale name but rather add on a name or logo that is modern, catchy and that the people of the Hibiscus Coast can relate to and identify with.

It was recognised that many modern sports competitions worldwide had formulated an association with a suitable animal/bird/icon or that a catchy name had delivered a marketing device that captured the support and ownership of the people.

- Super 12 - Blues, Hurricanes, Brumbies etc.
- NRL Rugby League - Warriors, Sea Eagles, Rabbitohs, Bulldogs etc
- NBA Basketball - Lakers, Bulls etc
- NBL Baseball - Red Sox, Yankees etc
- NFL Gridiron - 49er's, Steelers etc.

In the early 90's the club had created the 'Seahawk' icon for its junior club which proved a successful device to create a sense of belonging for the Juniors. However, due to a lack of attention that theme had gradually died.

There was a broad acceptance that the Seahawk was the right icon to use due to :

- The brand Silverdale Seahawks - rolls off the tongue well.
- while an imaginary bird, it conjures up vision of coastal/seabird, which sits well with Hibiscus Coast.
- has an aggressive, hard edged connotation with the hawk, which sits well with the rugby theme.

Following the evaluation two options were produced:

- a 'head' version being a more mature version which was envisaged for use by the senior club. This version can be seen on the front exterior of the building. This design is similar to that of the West Australian Eagles Australian Rules team and the Seattle Seahawks American NFL team logo's.
- The 'cartoon' version which is an original design produced by **Roy McDougall** and was intended at the time to be more for the junior side of the club.

Following acceptance by the club board a re-branding campaign was introduced to extend the use of the Seahawk theme, name and icon across all sectors of the club . The aim of the campaign being:

- to devise and create a more modern Seahawk bird
- to devise and create a logo incorporating the new Seahawk bird and the words Silverdale and Seahawks. The logo to primarily be used for apparel, headwear, letterheads etc with the possibility that it might replace the current shield emblem over time.
- to undertake a marketing campaign that over time will result in the club being known as 'The Seahawks' instead of Silverdale Rugby club.

However, over time the 'cartoon' version produced below proved to be the more popular version with senior teams starting to use it on their apparel. This design is now widely used across the club on stationary as well as apparel.

*Club Centurion Roy McDougall, a graphic artist by profession was engaged to create the new look and submitted a number of options. The style of Seahawk used today was voted the most popular of Roy's creations, and looks set to claim its place in the club's history.*



- **2005:** Charlie McAlister was awarded the Green & Gold Award for his services to the club.
- **2005: Luke McAlister** made his All Black debut against the British Isles in July 2005 at Auckland. Luke represented New Zealand as an All Black on 30 occasions. He had represented New Zealand at Schoolboy level in 2001, Under 19 level in 2001 & 2002, Under 21 level in 2002-2004, Junior All Black in 2005. He also represented New Zealand Maori in 2005 & 2010 and was selected the IRB U19 player of the year in 2002 and finalist as IRB Under 21 player of the year in 2004. Luke was an important ingredient in Silverdale's' 2003 Premier Championship win.



- **2006: Greg Rawlinson** made his All Black debut against Ireland in Hamilton. He was the first South African born player to play for the All Blacks. Greg was an important player in Silverdale's' first Premier Championship win in 2003.



- **2006: Ryan Wilson** represented New Zealand Under 21's
- **2006:** North Harbour won the Ranfurly Shield for first time beating Canterbury 21-17 in Christchurch – greatly assisted by three Silverdale players – Luke McAlister, Greg Rawlinson and Ryan Wilson.



- **2007: Janine Rutter** was awarded the Green & Gold Award for her services to the club.
- **2007:** the club was approached by the Rodney District Council to discuss the possible use of the proposed Metro Park sports grounds in Silverdale North, and was asked to make a submission to the council regarding the future needs of the

club. Although the club had in 2004 as part of its second five-year plan determined that the clubs home should remain at the Silverdale War Memorial park, it was none-the-less considered sensible to maintain a dialogue with the council.

- **2007: *Thomas Chamberlin*** represented New Zealand Under 21's
- **2008:** the club again reiterated its intention to retain 'our home' base at the Silverdale War Memorial Park. The Rodney District Council were informed of the decision, and informed that given the clubs projected growth, it was anticipated that they would use Metro Park grounds when available. It was intended that a review of the clubroom be carried out.

***Sadly Life Member Joe Bawden died 28<sup>th</sup> October 2008 aged 91.***

- **2009:** Annual General Meeting approved the nomination of three new Green & Gold Meritorious Award:
  - Ian Bromley
  - Lance Fitzpatrick
  - Neville Brothers

***Tragically club stalwart Leigh Dodds - ex Club Captain and coach of both junior and senior teams died 4<sup>th</sup> June 2009 aged 48.***

## 19: Netball:

- **2008:** the Seahawks Netball Club was formed and a team entered in the Hibiscus Coast Netball Competition. The driving force behind this venture was Liz Goodfellow who had a long association with the rugby club, and felt that players sisters, wives, girlfriends and female supporters of the rugby club could help the club develop into a multi-sport club, along with rugby and touch, and to become club members in their own right.

The inaugural team was:

*Jennie Langridge, Louise Natapu, Jo McLiver, Turanita Tipene, Mear Titchener, Pauline Bates, Natasha Thompson, Lisa Crawford, Tracey Bracken. Coach; Liz Goodfellow*

Initially the Seahawks entered one Premier team which finished a creditable third. The following year a further team was added in the Senior grade. Liz Goodfellow becoming *Association Player of the Year*.

- **2010:** team numbers doubled to four – two premier and two senior teams. The Seahawks Premier 1 team going through the season unbeaten and claiming the Association title for the second year, also winning the top shooting and defence awards and the *HBCNetball Association Premier Player of the Year* – Elissa Edgington.

The number of teams was again increased in 2011 with a Collegiate team added, coached by Shiloh Holder. The Premier team again went through the season unbeaten and took out the honours for the third year. The 'Chicks' moved up to Premier 2 grade that they won convincingly. Both Premiers and Chicks took out all the *HBC Netball Association Senior Awards*.



- ***Four members were honoured in the 2000's with Life Memberships in recognition of their service to the club:***

- 2005: Don Douglas
- 2005: Denis Henderson
- 2008: Terry Wilson
- 2008: Gary Colhoun

- ***2000 Centurians:***

- 2001: Lance Fitzpatrick
- 2003: Raana Horan
- 2003: Glen Donovan
- 2005: Roy MacDougall
- 2006: Aaron Spencer
- 2007: InokeVatakani
- 2008: Hoani Moore
- 2009: Andrew Gowling
- 2010: Simon McKennie

## 20: Silverdale 'Seahawks' Junior Rugby:



Although records are not clear as to when the first 'junior' team played, it would appear that junior grade rugby at Silverdale was going well after WW2. It is uncertain if junior rugby was played at Silverdale in the 1930's.

Although junior rugby thrived at Silverdale in the 1960's, 1970's and 1980's, it was in the 1990's along with the population growth of the Hibiscus Coast and in particular the Whangaparaoa peninsula that junior rugby began to show significant growth. Although other sports, particularly soccer junior numbers also showed growth, it was because of the reputation for organization that was behind the 'Seahawks' growth.

- **2003: Introduction of Ripa rugby:** Silverdale was selected to conduct an experiment devised by the New Zealand Rugby Union intended to introduce rugby to the 'beginner level' - five and six year olds. The concept was branded 'Rippa Rugby' and was supported by a NZRU advertising campaign. Ripa involved no tackling, no lineouts and no scrummages. The emphasis was intended to be upon learning, safety and fun.

Silverdale Juniors introduced two J7 and two J8 teams. Initial reaction from parents was mixed. Many parents, particularly those with a rugby background or whose children had played the previous year were not happy about the 'no tackling - no lineout - no scrummage' concept and a group expressed the intention to form their own 'club' based upon providing their 5 & 6 year olds with 'traditional rugby'. The club president and junior club captain at the time (Don Douglas and Stuart Fluker) conducted a round of 'teach-in's' to parent groups and schools following which it was agreed to give the concept 'a go'.

Silverdale 'Seahawks' juniors continues to progress - now with thirty teams - ten of which are 'Rippa'; total junior players close to 500. J2's & J5's won their North Harbour Championships. The 'Seahawks' producing two Roller Mills and seven Goldfields representatives.

- **2006:** Silverdale 'Seahawks' juniors team numbers reached 20 traditional teams and ten rippa teams, making total numbers just under 500. Over 500 junior players were registered in 2007, making Silverdale the club with the largest number of juniors in North Harbour.

Junior playing numbers continued to grow as the Hibiscus Coast population expanded, and Silverdale became a powerful force in North Harbour junior rugby. **2001** also saw the year that Silverdale Juniors gaining four championships in 2001 and three in 2002.

- **2013:** This season also saw the club achieve a new milestone – 573 junior registered players. Considerably the largest number of juniors within the North Harbour Rugby Union and one of the largest in the country.

Junior success continued with the Silverdale Seahawks becoming the powerhouse of North Harbour junior rugby emphasised by the achievements at the North Harbour Junior Rep Tournament:

- **2014:** Winners: J3 & J4
- **2015:** Winners: J2 & J4
- **2016:** Winners: J2 & J3
- **2017:** Winners: J2, J3 & J4

## **21: 2010 to present:**

- **2011 Highlights:** The club won two championships – senior 1<sup>st</sup> and Under 21, and New Zealand hosted the Rugby World Cup.
- **2011 World Cup:** Following the announcement that New Zealand had won the rights to host the 2011 World Cup, it became evident that clubs were to be asked to express interest in playing a part by hosting teams as training venues. The Silverdale management under the direction of Club Chairman Jon Marshall were keen to be a participating club and started preparation early. The application documentation was large and demanding, but with the help of the Rodney District Council a bid document was produced which addressed training and proposed to host teams on the Hibiscus Coast, supported by a professional slick presentation of the area.



*Japan coach John Kirwan and the Japan World Cup team meet visit the Silverdale Club*

The aim from the club prospective was to be part of a major event, to be at the centre of a community project, and to raise the profile of rugby. It had been hoped that the club would become a place where the local community could watch games, but because of licensing and advertising restrictions this did not prove possible.

Silverdale were selected as a training venue for three teams – prior to and during the World Cup.

- Japan for thirteen days up to their first game against France.
- Namibia and Samoa for three/four days during the cup.

Silverdale provided its playing fields, clubrooms – both lounge and changing rooms, logistical support with moving training equipment, Internet access and an active group of volunteers who assisted with the setting up of training. In all four volunteers from the club and two club staff were involved during the teams stay at Silverdale.

The three national teams trained at Silverdale – Japan held an open training session attended mainly by enthused school children. The Stanmore Bay Leisure Centre pool and gym were also used.

In order to satisfy the requirement of the World Cup organizers, all hosting clubs were required to meet certain stringent playing field, clubroom and changing room standards, which were upgraded by the Auckland Council invested significant expenditure in the upgrading of the clubs changing facilities and the main playing field. New changing room floor, fittings and showers were installed.

The rugby world cup was held in New Zealand, and Silverdale took an active part as a host club, playing host to the Namibian, Samoan and Japanese teams.

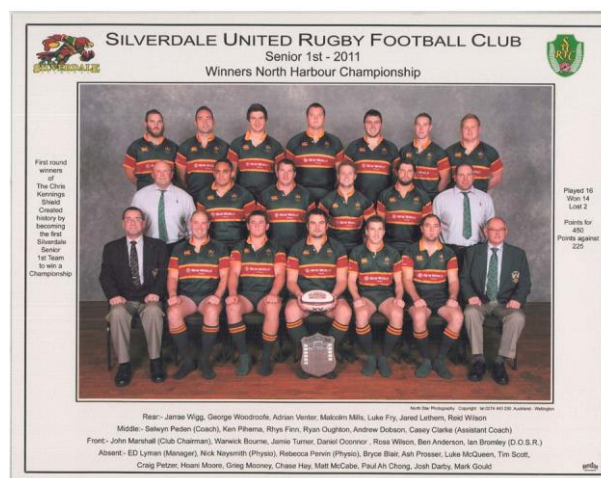
The teams were located locally, accommodated at Gulf Harbour and using the Stanmore Bay Leisure Centre gym and pool as required.

Also in July 2011 a Special General Meeting was held at which Chris Carter outlined the plans proposed by the Board of Directors for the comprehensive upgrade of the club building. A motion was put before the meeting, and was carried unanimously:

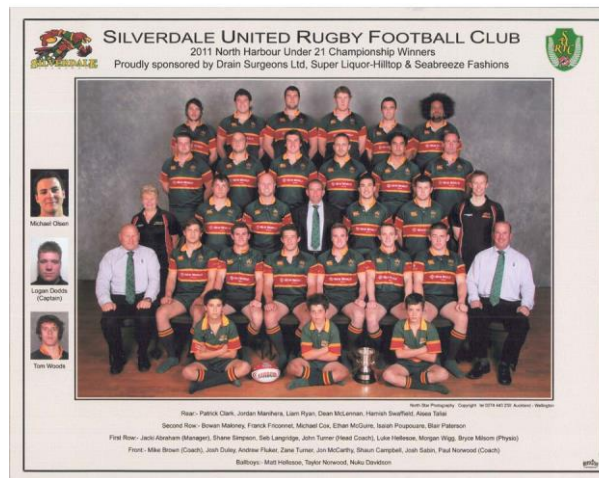
- Capital expenditure not to exceed \$1m
- Funding commitments from grants to a maximum of \$500k
- Funding by way of secured bank loan not to exceed \$300k
- A lease agreement with the Northgate Church
- Internally prepared cash flow statements to be reviewed by a chartered accountant.

• **2011 proved to be another significant year for the club.**

- Jacki Abraham was awarded the Green & Gold Award for her services to the club.
- Silverdale Senior 1<sup>st</sup> won the first round of their competition, and went on to win the North Harbour Senior 1<sup>st</sup> Championship beating North Shore in the final.



- Silverdale Under 21's – having survived some tough games, won the North Harbour Under 21's Championship – beating North Shore.



- **2012:** *Glen Preston* represented New Zealand Under 20's
- **2012:** The club reached and played in the Premier and Under 21 Championship finals, losing narrowly to Western Pioneers in the final of the Premier Competition and narrowly in the final of the Under 21's.
- **2013:** The club celebrated 50 years following the inclusion of the word United to the clubs name in recognition of the Kaukapakapa Clubs incorporation into the Silverdale Club.
- **2013:** *Jordan Manihera* represented New Zealand Under 20's.
- **2014:** *Club Building Upgrade/Metro Park:*

It had become apparent to Board members in 2006 that consideration should be given to the ageing of the Club building. The July 2006 Board Minutes record the setting up of a sub-committee to consider this issue, members being Jeff Miller, Jon Marshall, Don Douglas and Chris Carter. A number of people have served on the building review sub-committee over the following years including Bruce Ryan and more latterly Dave Wrathall.

The changing nature of club rugby during this period widened the review to also consider a more commercial attitude towards the building, to include revenue from tenants. Significant work on options to increase the revenue stream from the building were undertaken by the sub-committee. These included constructing professional offices in the 'gym area', relocating the club to the opposite side of the SWMP and leasing or selling the whole current clubrooms; a new single tenant in the 'gym area'.

After prolonged discussions and due diligence it was felt the new single tenant option would be the most beneficial for the club. An extract from a report provided to members, and prepared by Chris Carter for the July 2011 Special General Meeting stated – "The Board has therefore determined that the Clubs future lies at the current location at SWMP with unencumbered ownership of the club building....." For the SGM John Thwigg - Architect had been engaged

to prepare plans for the upgrade of the building. As previously reported the SGM approved the raising of borrowings to fund the upgrade.

An interesting letter was received (23 Dec 2011) from the Hibiscus & Bays Local Board which was the 'formal' starting point of an invitation to the club to participate in the planned Metro Park multi-sport development, although as mentioned previously informal overtures had been made a number of years earlier.

The Board Minutes (7 Feb 2012) record that reluctantly the current rental tenancy of the 'gym area' held by North Harbour Gym Club was terminated on the 31 Jan 2012 as the Gym Club was unable to pay additional rental for the space occupied, and the rental was substantially below a market rate rental. A new lease was entered into with the Northgate Church which up to that point had since 2005 used the club lounges for church services on Sundays, the new lease commencing 1/3/12, and was entered into on an 'unimproved basis' – the 'gym area' being reported as 'not in bad shape' and offices on the 2<sup>nd</sup> floor were also occupied by Northgate Church.

During the 2012 year there were a number of 'testy' Board meetings mainly relating to a possible club involvement in the Metro Park development. The result being that later in the year the Board put building plans 'on hold' while due diligence was undertaken regarding the Metro Park development. Messrs Greg Woodd, Stuart Fluker, Paul Evans and Chris Carter were to act on behalf of the Club. Paul Evans and Chris Carter were unable to continue

- **2014:** This proved to be a momentous year. As reported above, Local Board correspondence, meetings and local press reports had indicated that the land to the southwest of Orewa (known locally as the 'poo ponds') would be developed at some point in the future. As far back as 2007 informal discussions and correspondence with staff of the Hibiscus & Bays Local Board had mentioned the possibility of a new sport complex which might include upward of twelve playing fields, a stadium style field, changing and club rooms. Years later plans were announced for a major housing development and a downsized sport complex.

Although the club had determined and reiterated that it saw no 'compelling' reason to relocate, the Board of Directors in the years immediately prior to 2014 had opened discussion with the Auckland Council and other sporting bodies (athletics, hockey & cricket) with a view to establishing a sport hub and clubrooms at new grounds which was then under development. The proposal put to the clubs involved a multi-sport use of the council grounds, shared council changing facilities and shared clubrooms. The clubrooms to be funded by the interested sport clubs.

The Board of Directors at that juncture felt that the club would require more playing fields and as had been considered in 2006, that the club building completed in 1968 would require considerable future maintenance. It was felt that a relocation to Metro Park would resolve both issues. A feasibility study was commissioned from Visitor Solutions which was presented to the club in April 2014.

- **2014: *Changes to the Board of Directors:***

As a result of concerns relating to the then Board of Directors approach to a move to Metro Park along with management issues within the premier team - the 2014 Annual General Meeting saw large number of changes to the Board of Directors

Don Douglas returned as Chairman along with Dave Wrathall as Director of Operations, John Turner as Director of Senior Rugby, Jamie Schedeway as Director of Junior Rugby and Steve Faulkner as Director of Planning. Chris Carter was persuaded to return as Director of Finance, while Terry Creagh who had been a member of the previous Board with a responsibility for overseeing the Metro Park project continued as an independent director.

- **2014/2015: *Metro Park - evaluation:***

Following a period of evaluation, the new board determined that a full 'due diligence' process should be undertaken to address both the feasibility of a move to Metro Park and of staying at the Silverdale War Memorial Park. The eight month due diligence process - undertaken primarily by Director of Finance Chris Carter and Chairman Don Douglas was followed in June 2015 with a series of briefings to members supported by expert guest speakers.

In February 2015 a feasibility study by Fay Freeman Associates, and funded by council was presented.

A proposal was presented to members of the club on the 2<sup>nd</sup> July 2015 at which the members voted emphatically (145 - 9) to reject any proposal to leave the War Memorial Park. It was also agreed by members that any question of relocation should not be raised for a further ten years.

Following the vote taken at the 2 July 2017 SGM to remain at the SWMP, the Board again renewed investigations into upgrading the club building and lease tenancies. This was mainly lead by new Chairman Dave Wrathall and Finance Director Chris Carter, resulting in members approval at a SGM held on the 23 August 2017 to borrow up to a maximum of \$1,1m for the new building upgrade project.

- ***New Opportunities:***

Many of the decisions at this time were based around the changing nature of sport. Soccer was achieving growth in playing numbers, mainly as a result of being a 'non-contact sport'; New Zealand in general, and the Orewa, Silverdale, Hibiscus Coast areas were undergoing a period of high housing growth and immigration, many of whom were Asian and did not participate in rugby or contact sports.

Under the new Auckland Council, 'multi-sport' became a popular terminology as clubs (rugby and other sports) had difficulty affording their own premises and volunteers were becoming harder to find.

The club was seen to be in a unique situation of owning its own land and buildings, thanks to the foresight of earlier members. However as was being experienced at this time, Board members also realised that owning their clubrooms came with a significant responsibility to maintain and preserve the asset for future club members.

The direction taken by the Board was twofold – on-field sport and the securing of assets for the future. It is based upon this background, that the Board of this time adopted a four part strategy:

- It established in 2015 a Policy (#34) to set \$50,000 aside annually to be accumulated in a separate fund as a Capital Upgrade Reserve.
- The Board (as previously explained) committed to upgrading the club building and increasing revenue streams from tenants.
- The Board established an Endowment Trust
- The Board entered into the Clubs first significant investment – Electronic Signage.

- ***The Silverdale United Rugby & Sports Club Endowment Trust:***

The “objects” of the Trust were set out in the Trust Deed, being mainly to accumulate an independently managed capital fund for the upgrade of the club building and facilities on the SWMP playing fields.

The Trust Deed was formally incorporated on the 9/12/16, with the Trustees being Terry Wilson (Chair), Calvin Howarth (Secretary), Tim Ellery, Nicky Lafferty and Chris Carter (Advisory Trustee)

The Trust was first launched to members at a SOBS function held on the 29/4/16.

The main work related to establishing the Trust was done by Chris Carter and the Club solicitor Nola McGowan.

- ***Investment – Electronic Signage:***

The location of the club building and the SWMP was at this time surrounded by new growth. What previously to the south had been pasture was now developed for future housing; new neighbours were Pak n Save and Bunnings, large retail outlets, on the opposite side and across the Silverdale Highway was being developed - a petrol station and adjoin land had a light commercial zoning together with a Park ‘n’ Ride facility.

The Club was now located on a high profile site with approximately 30,000 cars passing each day. While the timing was difficult, as the Board was committed to the building upgrade project, the electronic signage investment opportunity arose. The Board committed the Club to a 25% share in the sign at a cost of \$106,500. The underlying purpose being revenue generation for the club.

- ***2014: Change of name:***

Following a decision by the North Harbour Rugby Union to amend the name of the union by the removal of the word ‘football’, it was proposed at a Special General Meeting of the club that a similar change should be made by the club. The name of the club was changed to be ***Silverdale United Rugby & Sports Club – established 1887 – Silverdale/Kaukapakapa RFC’s amalgamated 1963.***

As evidence of rugby having been played locally in 1887, the Board of Directors took this opportunity to review the history of the club and its establishment of 1887.

- **2014: Badge & Crest re-design:**

It was determined that the club should recognise its past and adopt the 27<sup>th</sup> August 1887 date as its beginning. It was also determined to review the clubs crest and badge design. This process involved a club based on-line survey (Survey Monkey) which produced guidance to the designer Roy McDougall, following which a series of designs was produced and a favoured design presented to club members at a Special General Meeting for their evaluation and approval. The designs below were those approved by members as the new club badge and crest.



It was also agreed and confirmed that the Seahawk logo would continue to be used on casual clothing.



- The following received the **Green & Gold Award for Meritorious Service:**

- 2011: Jacki Abraham
- 2012: Selwyn Peden
- 2015: Chris Carter
- 2015: Nola McGowan
- 2015: Roy MacDougall

- **2010 Centurian:**

- 2016: Darren Wigg
- 2017: Matt Clark

*This history is a living document. There may be things that are not correct or stories and facts that you feel should be included or perhaps excluded - if so please let the club know*

*Last Updated September 2017*